



Fire Safe Corona



Brian Young, Fire Chief

July 15, 2020

Fire Safe Corona

a new Firesafe Council

Focused on community-based wildfire risk reduction and resiliency.



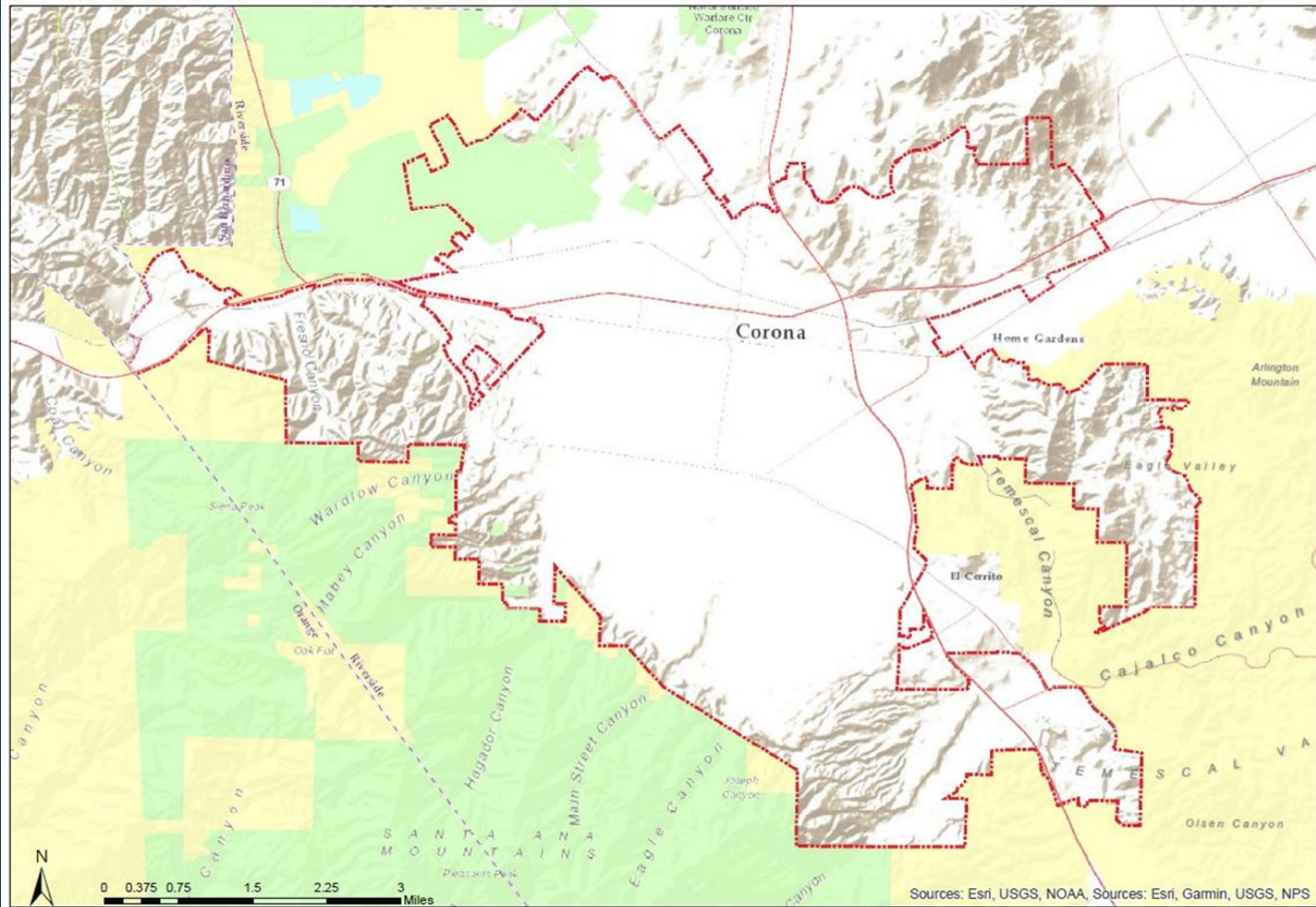
15,000 homes

Thousands of wildfires strike California every year. It's not a matter of if your home is at risk, but when.





FireSafe
CORONA



Fire Protection Responsibility Areas:

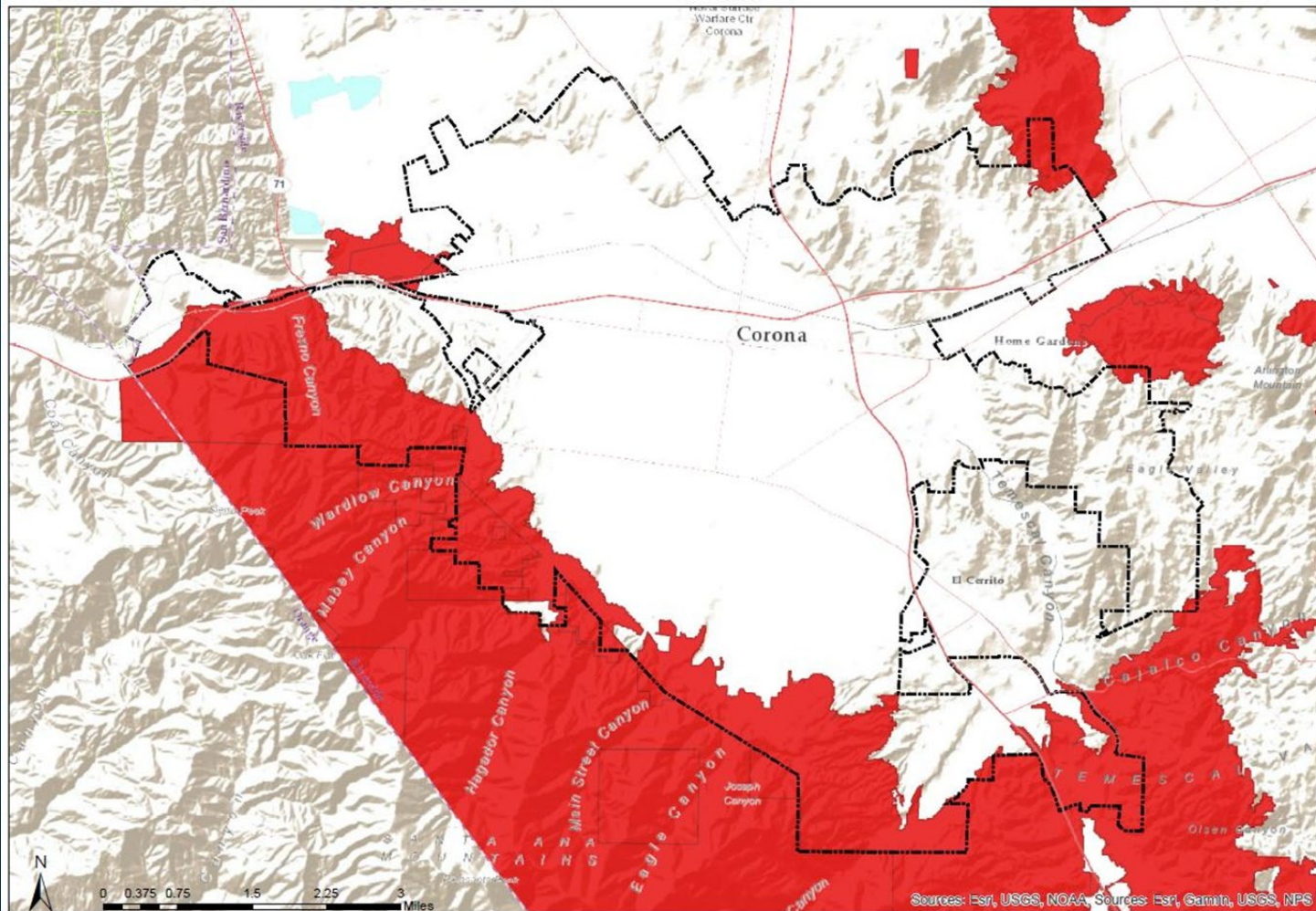
Federal Responsibility

State Responsibility

Corona City Boundary



FireSafe
CORONA

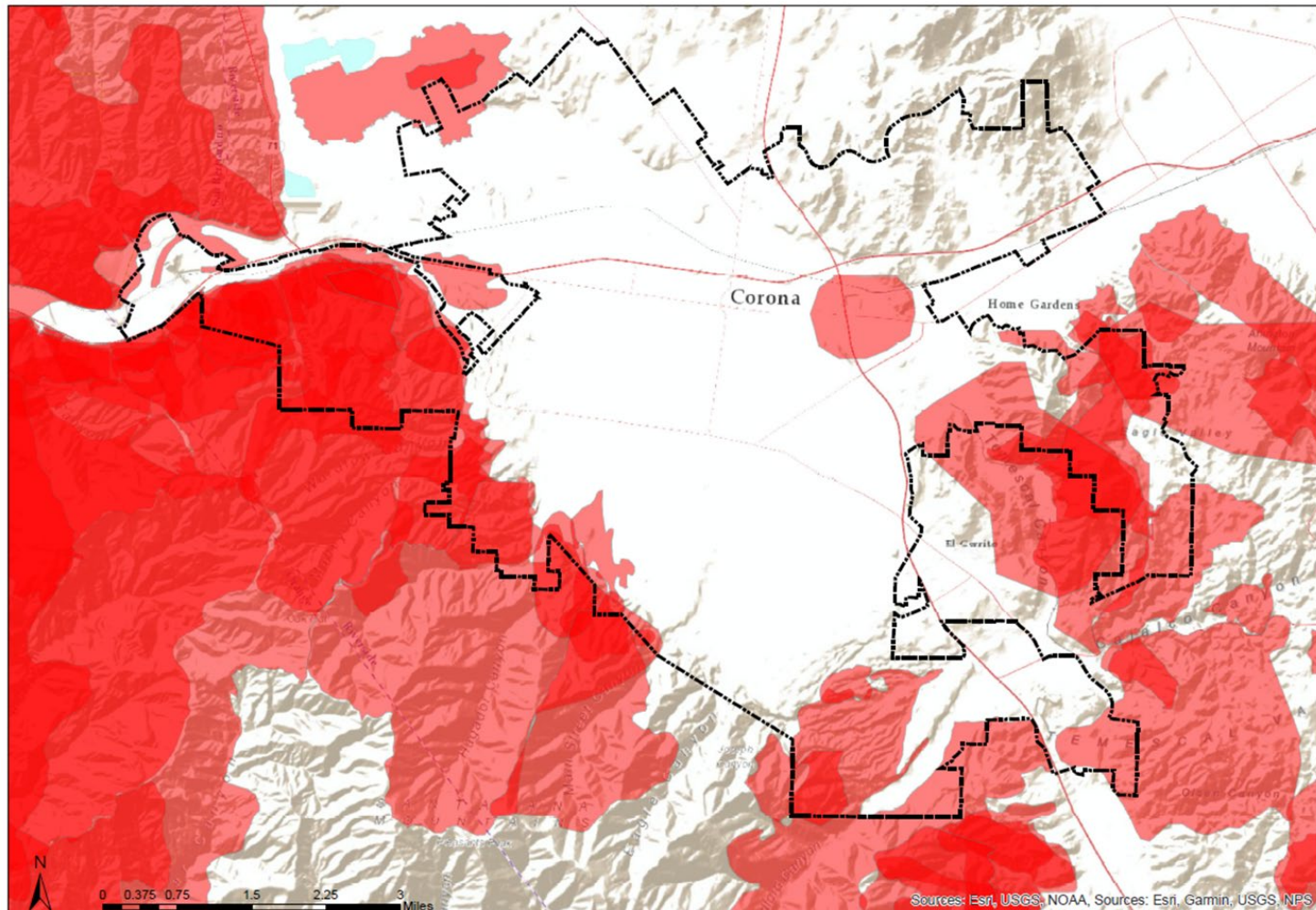


Fire Hazard Severity Zones:

■ Very High Corona City Boundary



FireSafe
CORONA



Corona Fire History 1960's - Present

Darker red areas represent areas affected by several fires.

STEP 1

Is your
home
READY?

Create
defensible space
and harden your
home against
wildfire.

STEP 2

Are you
SET?

Develop a
wildfire action
plan.

STEP 3

Are you
ready to
GO?

Evacuate early.
Have an
evacuation plan
and exit strategy
in place.



Defensible space is the buffer you create by removing dead plants, grass and weeds.

- **Hardening your home means using construction materials that can help your home withstand flying embers finding weak spots in the construction.**
- **This combination of both defensible space and the hardening of your home gives your house the best chance of surviving a wildfire.**

**WILDFIRE IS COMING.
ARE YOU...**

READY?



**DEFENSIBLE SPACE AND
HARDENING YOUR HOME.**



Steps to Getting SET:

- Create a Wildfire Action Plan that includes evacuation planning for your home, family and pets.
- Assemble an Emergency Supply Kit for each person in your household.
- Fill-out a Family Communication Plan that includes important evacuation and contact information.

**WILDFIRE IS COMING.
ARE YOU...**

SET?



**GET PREPARED TO EVACUATE
BEFORE WILDFIRE STRIKES.**



When immediate evacuation is necessary, follow these steps as soon as possible to get ready to GO!

- Review your Evacuation Plan
- Ensure your Emergency Supply Kit is in your vehicle.
- Cover-up to protect against heat and flying embers.
- Locate your pets and take them with you

**WILDFIRE IS COMING.
ARE YOU READY TO...**

GO!

WILDFIRE EVACUATION GUIDE.



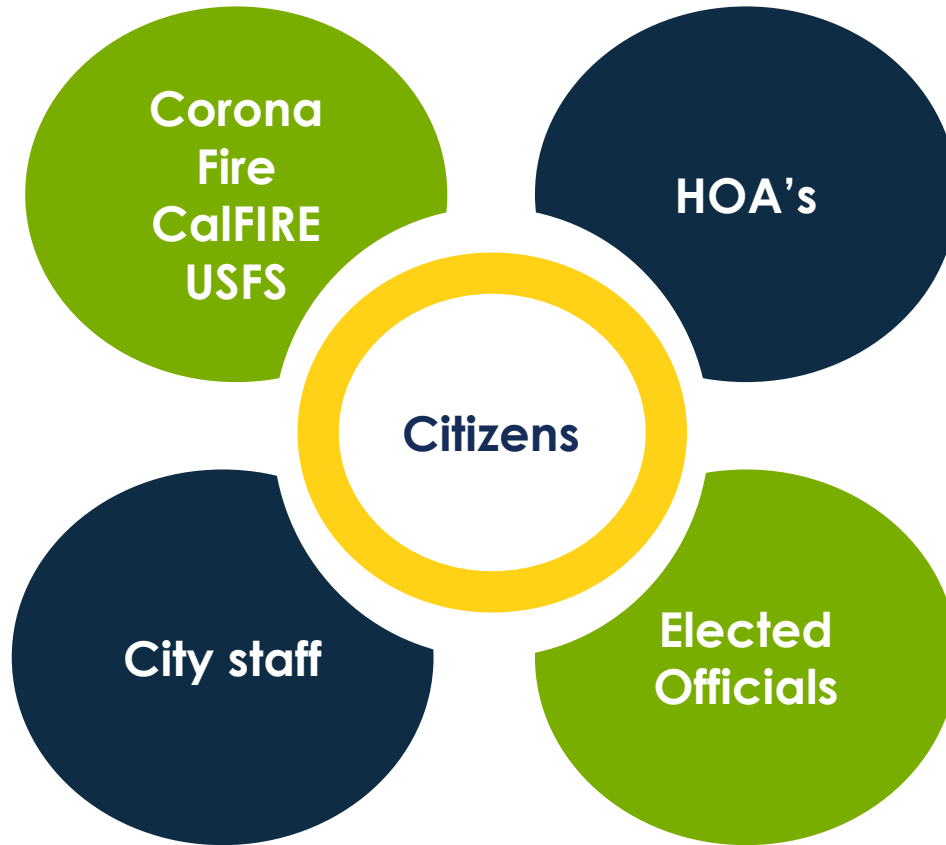


**Fire Safe
Corona**

will support the

READY phase

Stakeholders



The path forward



Win up to
\$5,000
IN WILDFIRE PROTECTION

TAKE A ONE-MINUTE WILDLAND PREPAREDNESS SURVEY
www.CoronaCA.gov/wildfire

MADE POSSIBLE BY:

BRANDGARD
YEMMAY

Key components...

Community Risk Assessment

Identifies risks, prioritizes risks and develops strategies and tactics to mitigate risks.

Mitigation Project Priorities

Creation of a list of prioritized initiatives, both structural and nonstructural, to reduce vulnerability to various hazards.

Community Wildfire Protection Plan (CWPP)

Identifies wildfire response, hazard mitigation, community preparedness, and structure protection.

Community Communications Plan

The plan empowers stakeholders to communicate about the spectrum of prevention and mitigation activities.

Community Home Ignition Workshops

Focused on defensible Space concepts and hardening structures.

Grant Programs

FireSafe Corona will learn to seek out, apply for and manage their own grants to fund mitigation and prevention programs.

\$ 60,000 grant (2019)

California Fire Safe Council

\$ 5,000 grant (2019)

Southern California Edison

2020 opportunities

Continued pursuit

Next steps...

Ongoing

- Community Risk Assessment
- Community Wildfire Protection Plan (CWPP)

Outreach

- Kick off meetings (Late August)
- Fire safe Council member identification
- Home Ignition Workshops

Mitigation

- Identify and prioritizes projects
- Example: Individual Community



QUESTIONS?



951-736-2220



firesafecorona@CoronaCA.gov



www.CoronaCA.gov

