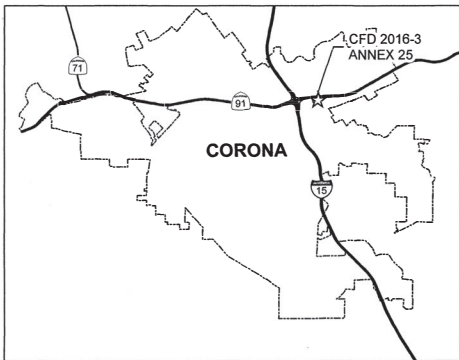
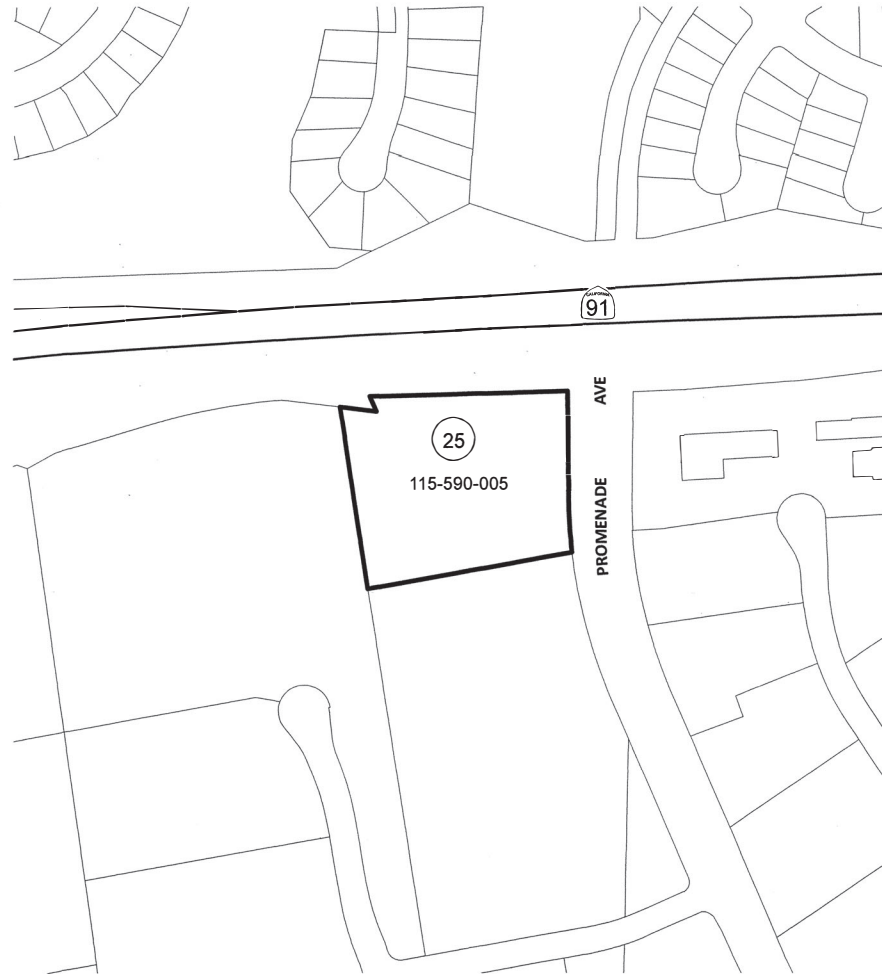


ANNEXATION MAP NO. 25
COMMUNITY FACILITIES DISTRICT NO. 2016-3
(MAINTENANCE SERVICES)
CITY OF CORONA, COUNTY OF RIVERSIDE, STATE OF CALIFORNIA

THIS MAP SHOWS THE BOUNDARIES OF AREAS TO BE ANNEXED TO COMMUNITY FACILITIES DISTRICT NO. 2016-3 (MAINTENANCE SERVICES), OF THE CITY OF CORONA, COUNTY OF RIVERSIDE, STATE OF CALIFORNIA.

THE BOUNDARIES OF WHICH COMMUNITY FACILITIES DISTRICT ARE SHOWN AND DESCRIBED ON THE MAP THEREOF WHICH WAS PREVIOUSLY RECORDED ON JANUARY 28, 2016 IN BOOK 79 OF MAPS OF ASSESSMENT AND COMMUNITY FACILITIES DISTRICT AT PAGE 26 AND AS INSTRUMENT NO. 2016-0034624 IN THE OFFICE OF THE COUNTY RECORDER OF THE COUNTY OF RIVERSIDE, STATE OF CALIFORNIA.



I HEREBY CERTIFY THAT THE WITHIN MAP SHOWING PROPOSED BOUNDARIES OF COMMUNITY FACILITIES DISTRICT NO. 2016-3 (MAINTENANCE SERVICES), OF THE CITY OF CORONA, COUNTY OF RIVERSIDE, STATE OF CALIFORNIA, WAS APPROVED BY THE CITY COUNCIL OF THE CITY OF CORONA AT A REGULAR MEETING THEREOF, HELD ON 21st DAY OF April, 2021, BY ITS RESOLUTION NO. 2021-018

Sylvia Edwards
 CITY CLERK
 CITY OF CORONA

FILED IN THE OFFICE OF THE CITY CLERK, CITY OF CORONA, THIS 21st DAY OF April, 2021.

Sylvia Edwards
 CITY CLERK
 CITY OF CORONA

FILED THIS 28 DAY OF April, 2021 AT THE HOUR OF 3:07 O'CLOCK PM IN BOOK 86 OF MAPS OF ASSESSMENT AND COMMUNITY FACILITIES DISTRICTS AT PAGE 94 IN THE OFFICE OF THE COUNTY RECORDER, IN THE COUNTY OF RIVERSIDE, STATE OF CALIFORNIA.

FEE: \$ 9.00 NO.: 2021-0264410
 PETER ALDANA, ASSESSOR, COUNTY CLERK, RECORDER

BY: Jackie Ota
 DEPUTY

LEGEND

- CITY BOUNDARY
- ANNEXATION AREA BOUNDARY
- PARCEL BOUNDARY
- XXX-XXX-XXX ASSESSOR'S PARCEL NUMBER
- (25) TAX ZONE



THIS ANNEXATION MAP CORRECTLY SHOWS THE LOT OR PARCEL OF LAND INCLUDED WITHIN THE BOUNDARIES OF THE COMMUNITY FACILITIES DISTRICT. FOR DETAILS CONCERNING THE LINES AND DIMENSIONS OF LOTS OR PARCEL REFER TO THE COUNTY ASSESSOR MAPS FOR FISCAL YEAR 2020-21.

SPICER CONSULTING GROUP