

COPY

87
59

SHEET 1 OF 1 SHEET

ANNEXATION MAP NO. 30 **COMMUNITY FACILITIES DISTRICT NO. 2016-3** **(MAINTENANCE SERVICES)** **CITY OF CORONA, COUNTY OF RIVERSIDE, STATE OF CALIFORNIA**

THIS MAP SHOWS THE BOUNDARIES OF AREAS TO BE ANNEXED TO COMMUNITY FACILITIES DISTRICT NO. 2016-3 (MAINTENANCE SERVICES), OF THE CITY OF CORONA, COUNTY OF RIVERSIDE, STATE OF CALIFORNIA.

THE BOUNDARIES OF WHICH COMMUNITY FACILITIES DISTRICT ARE SHOWN AND DESCRIBED ON THE MAP THEREOF WHICH WAS PREVIOUSLY RECORDED ON JANUARY 28, 2016 IN BOOK 79 OF MAPS OF ASSESSMENT AND COMMUNITY FACILITIES DISTRICT AT PAGE 26 AND AS INSTRUMENT NO. 2016-0034624 IN THE OFFICE OF THE COUNTY RECORDER OF THE COUNTY OF RIVERSIDE, STATE OF CALIFORNIA.

I HEREBY CERTIFY THAT THE WITHIN MAP SHOWING PROPOSED BOUNDARIES OF COMMUNITY FACILITIES DISTRICT NO. 2016-3 (MAINTENANCE SERVICES), OF THE CITY OF CORONA, COUNTY OF RIVERSIDE, STATE OF CALIFORNIA, WAS APPROVED BY THE CITY COUNCIL OF THE CITY OF CORONA AT A REGULAR MEETING THEREOF, HELD ON 1st DAY OF September 2021, BY ITS RESOLUTION NO. 2021-106

Alleyn Brundsen for
CITY CLERK
CITY OF CORONA

FILED IN THE OFFICE OF THE CITY CLERK, CITY OF CORONA, THIS 1st DAY OF September, 2021.

Alleyn Brundsen for
CITY CLERK
CITY OF CORONA

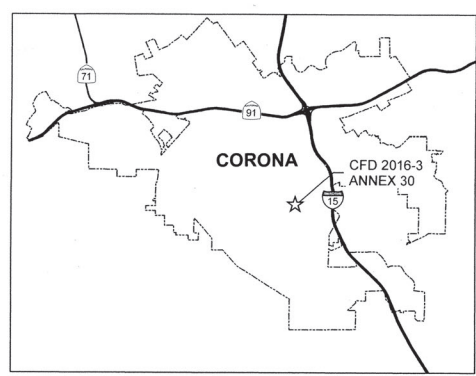
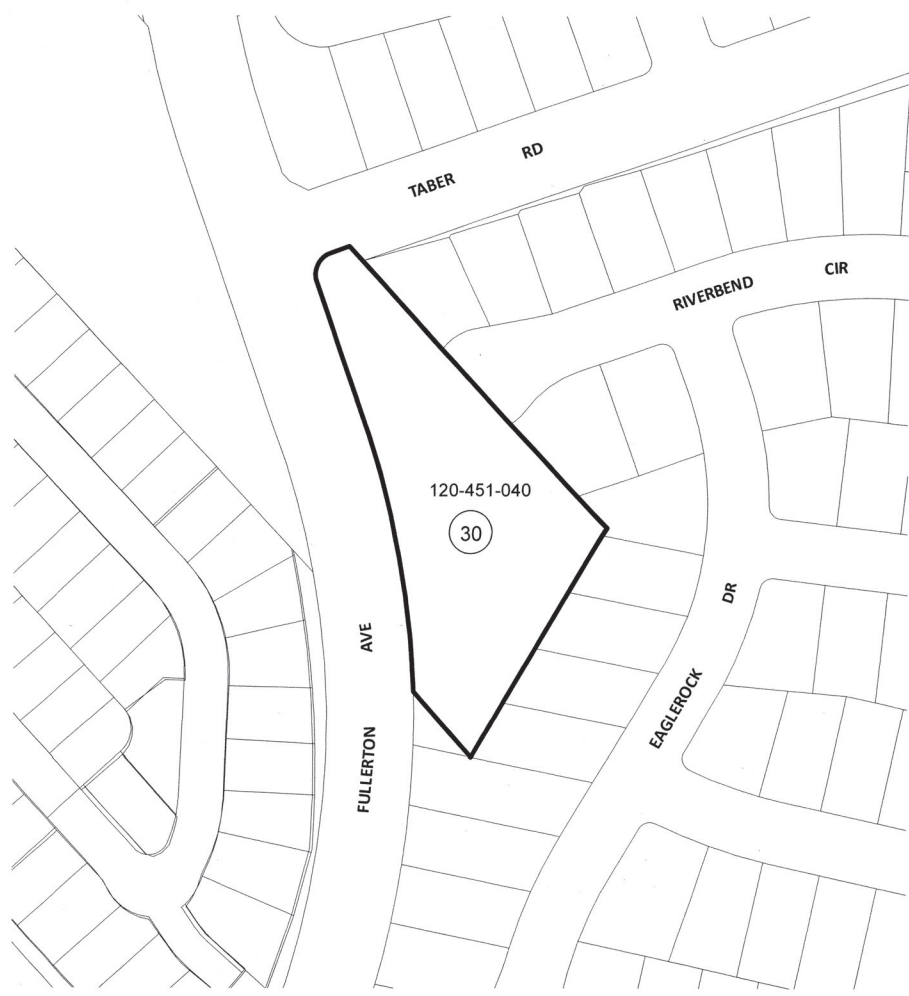
FILED THIS 8th DAY OF SEPTEMBER, 2021 AT THE HOUR OF 1:49 O'CLOCK P.M. IN BOOK 87 OF MAPS OF ASSESSMENT AND COMMUNITY FACILITIES DISTRICTS AT PAGE 59 IN THE OFFICE OF THE COUNTY RECORDER, IN THE COUNTY OF RIVERSIDE, STATE OF CALIFORNIA.

FEE: \$9.00 NO.: 2021-0535299
PETER ALDANA, ASSESSOR, COUNTY CLERK, RECORDER

BY: Paula Heron J. Albarr
DEPUTY

LEGEND

- CITY BOUNDARY
- ANNEXATION AREA BOUNDARY
- PARCEL BOUNDARY
- XXX-XXX-XXX ASSESSOR'S PARCEL NUMBER
- (30) TAX ZONE



THIS ANNEXATION MAP CORRECTLY SHOWS THE LOT OR PARCEL OF LAND INCLUDED WITHIN THE BOUNDARIES OF THE COMMUNITY FACILITIES DISTRICT. FOR DETAILS CONCERNING THE LINES AND DIMENSIONS OF LOTS OR PARCEL REFER TO THE COUNTY ASSESSOR MAPS FOR FISCAL YEAR 2021-22.