



# Park Equipment Standards



**Tracy Martin**

October 12, 2021



# Park Equipment Standards

Embody Community Vibrancy & Maintain  
Functionality and Durability

# Barbecue Grills & Bins

Rank from 1-3 or 1-4  
(1 = Best and 3/4 = Worst)

A



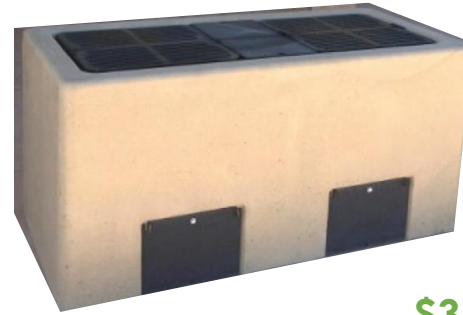
\$299

B



\$354

C



\$3,450

A



\$345

B



\$621

C



\$1,255

D

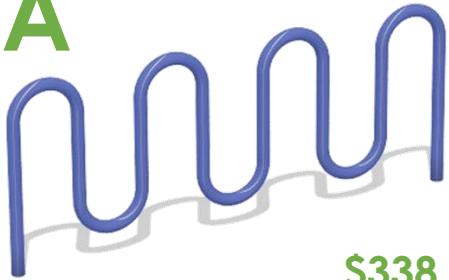


\$1,162

# Bicycle Racks

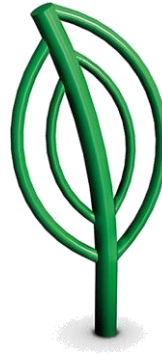
Rank from 1 to 5  
(1 = Best and 5 = Worst)

A



\$338

B



\$385

C



\$1,030

D



\$729

E



\$371

# Drinking Fountains

Rank from 1 to 5  
(1 = Best and 5 = Worst)

A



\$8,595

B



\$7,180

C



\$3,270

D



\$5,160

E



\$4,585

# Monument/Entry Signs

Rank from 1 to 4  
(1 = Best and 4 = Worst)

A



\$7,760

B



C



D



\$1,565 - \$5,630

# Picnic Tables

Rank from 1 to 4  
(1 = Best and 4 = Worst)

A



\$1,657

B



\$1,516

C



\$2,548

D



\$3,216

# Benches

Rank from 1 to 4  
(1 = Best and 4 = Worst)

A



\$1,437

B



\$1,585

C



\$2,608

D



\$1,208

# Trash Receptacles

Rank from 1 to 6  
(1 = Best and 6 = Worst)

A



\$1,137

B



\$1,100

C



\$951

D



\$1,249

E



\$814

F



\$1,527

# Rules Signage

Rank from 1 to 12  
(1 = Best and 12 = Worst)



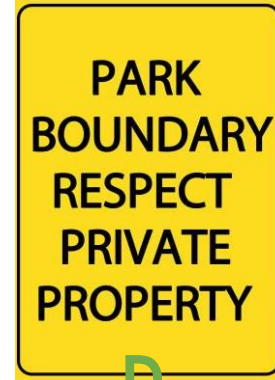
A



B



C



D



E



F



G



H



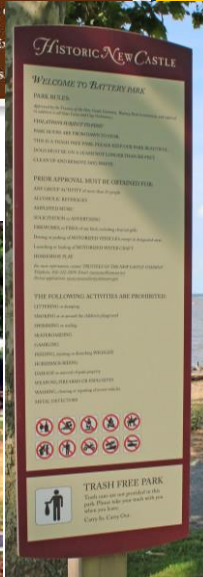
I



J



K



L

# QUESTIONS?



951-817-5880



Tracy.Martin@CoronaCA.gov



www.CoronaCA.gov





[www.CoronaCA.gov](http://www.CoronaCA.gov)

