

PARCEL MAP 37221

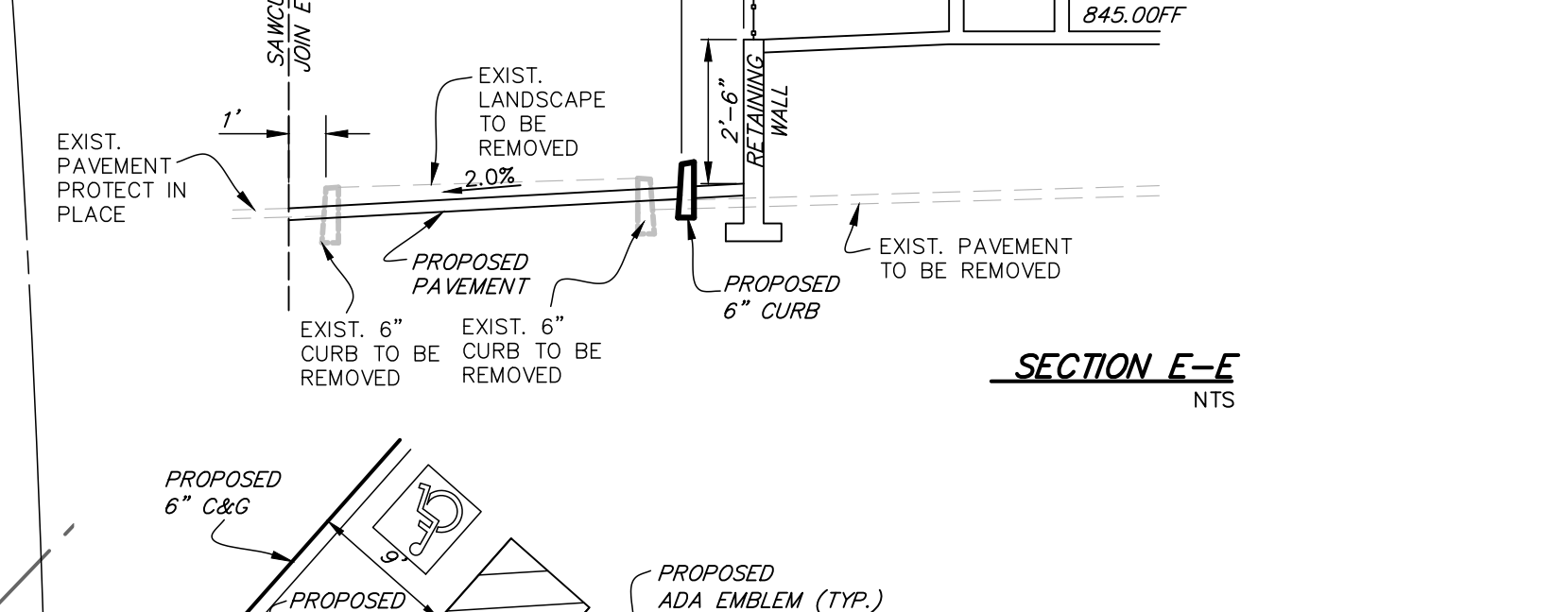
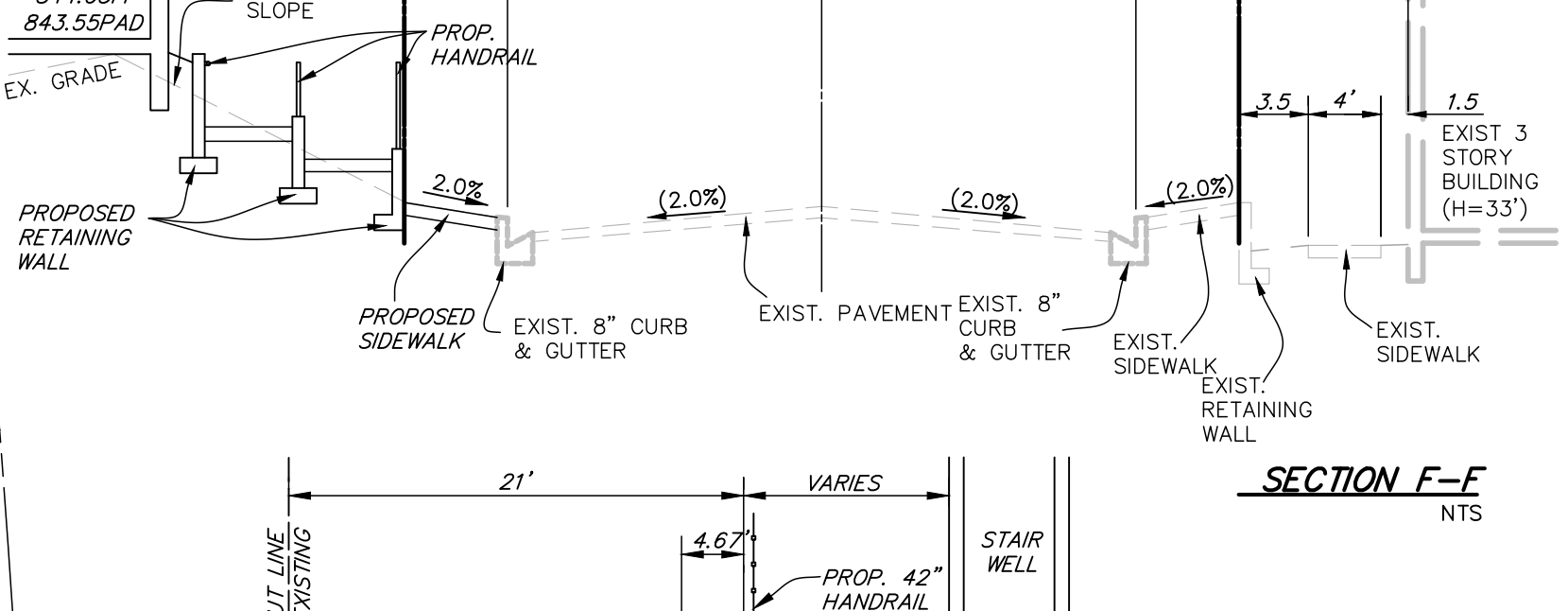
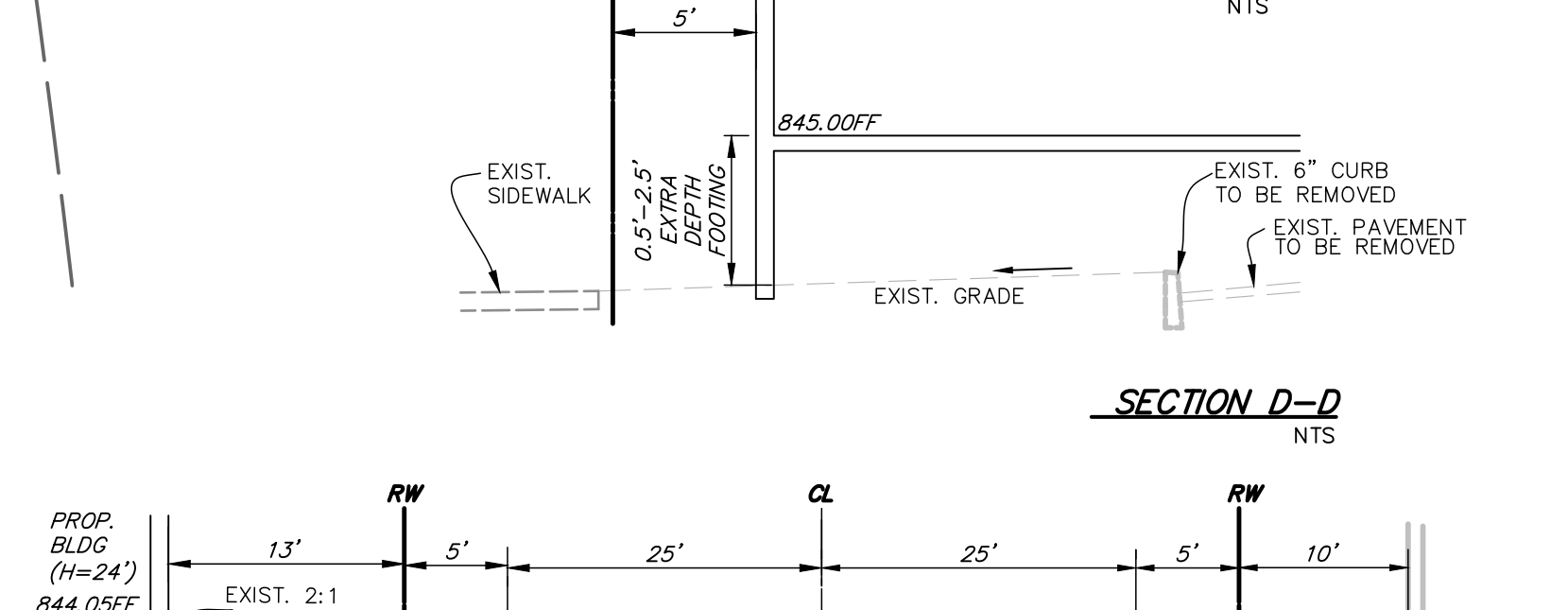
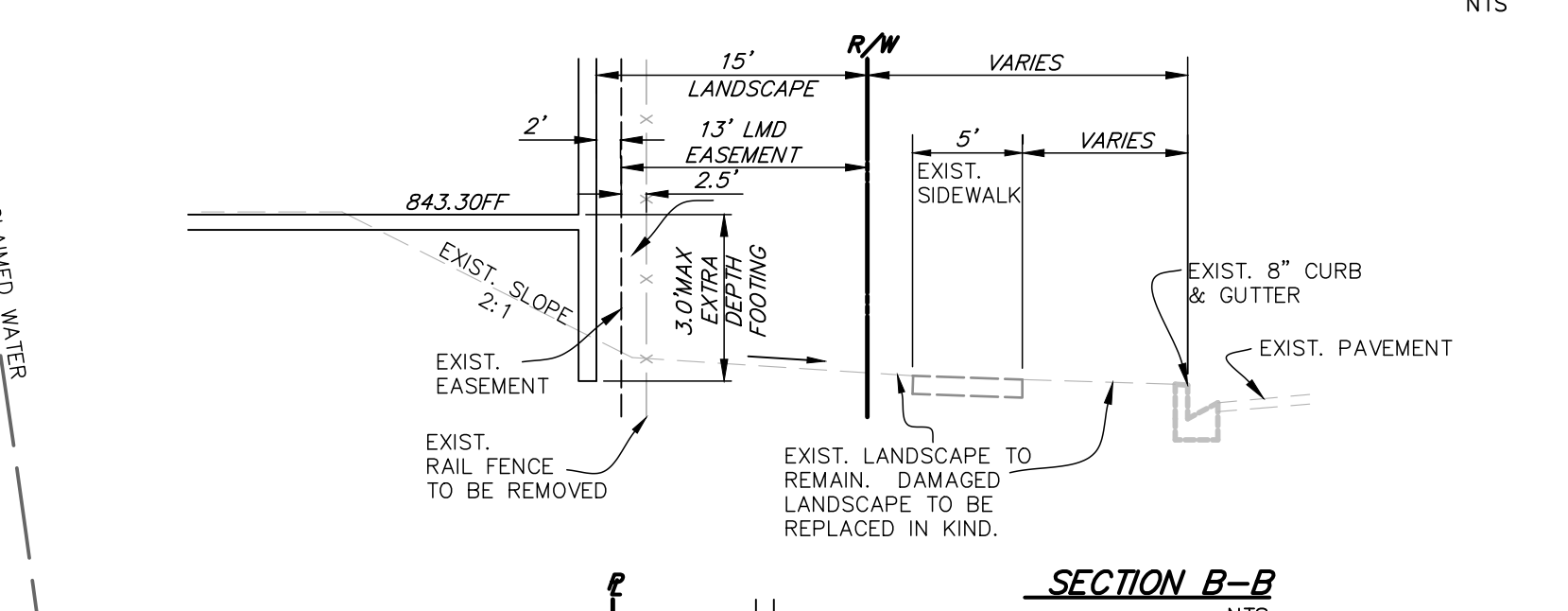
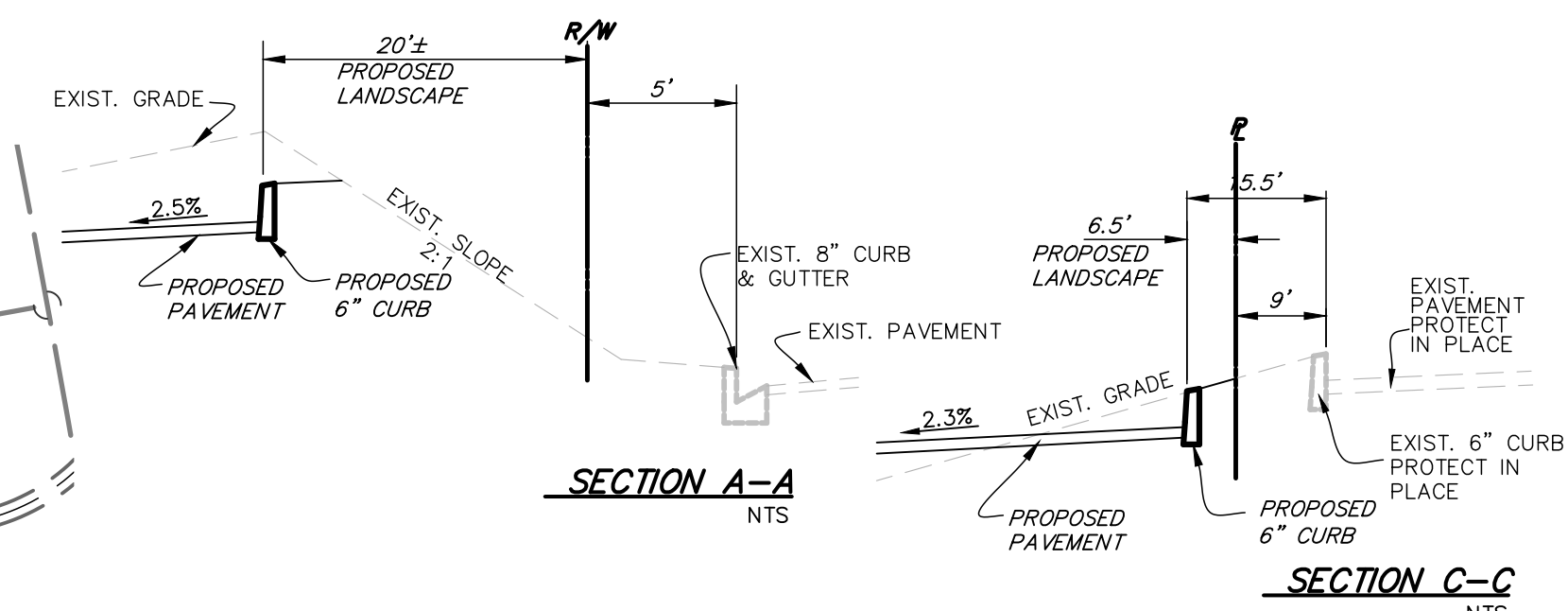
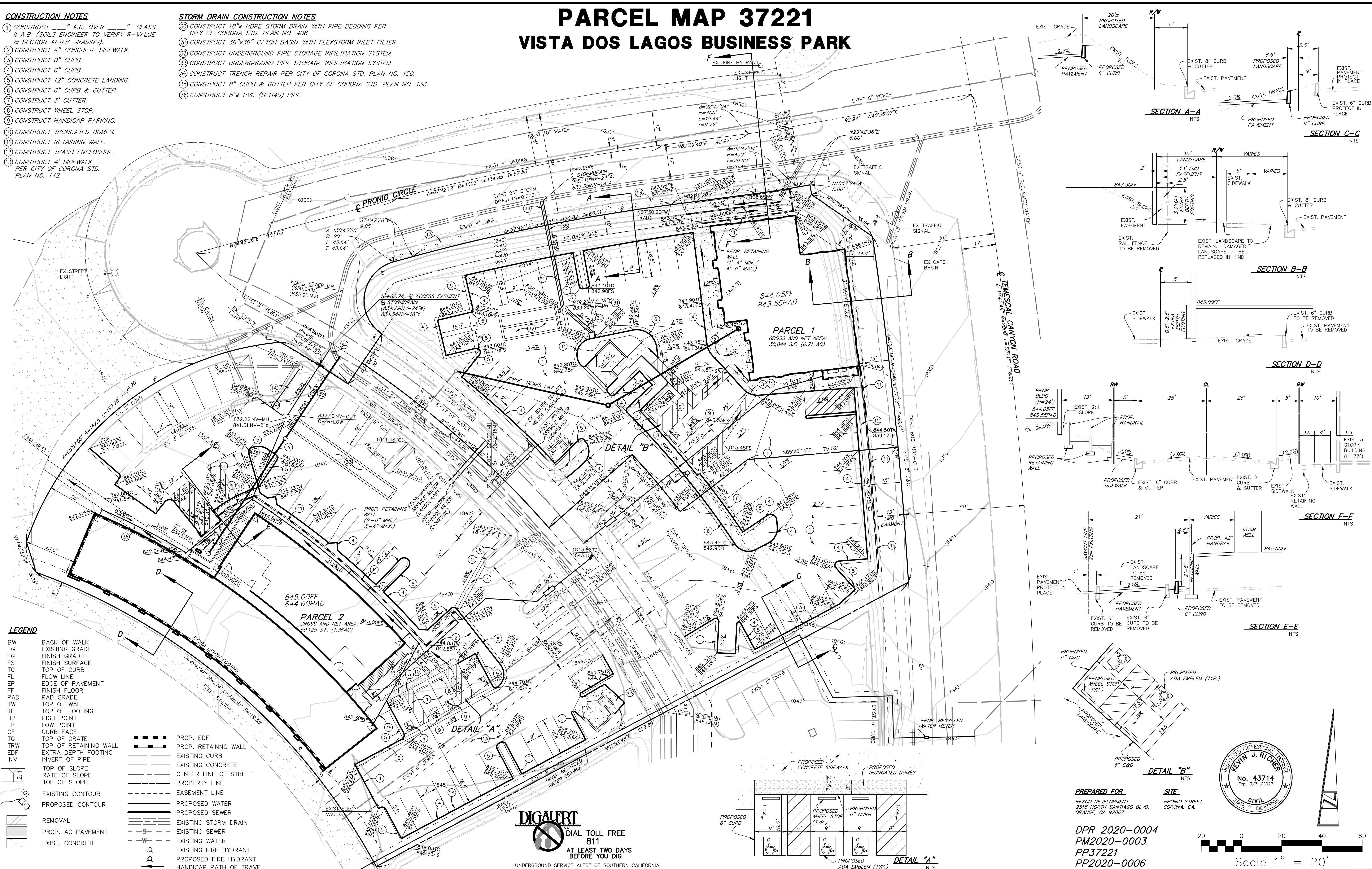
VISTA DOS LAGOS BUSINESS PARK

CONSTRUCTION NOTES

- 1 CONSTRUCT "A.C. OVER" CLASS II A.B. (SOILS ENGINEER TO VERIFY R-VALUE & SECTION AFTER GRADING).
- 2 CONSTRUCT 4" CONCRETE SIDEWALK.
- 3 CONSTRUCT 0" CURB.
- 4 CONSTRUCT 6" CURB.
- 5 CONSTRUCT 12" CONCRETE LANDING.
- 6 CONSTRUCT 6" CURB & GUTTER.
- 7 CONSTRUCT 3" GUTTER.
- 8 CONSTRUCT WHEEL STOP.
- 9 CONSTRUCT HANDICAP PARKING.
- 10 CONSTRUCT TRUNCATED DOMES.
- 11 CONSTRUCT RETAINING WALL.
- 12 CONSTRUCT TRASH ENCLOSURE.
- 13 CONSTRUCT 4" SIDEWALK PER CITY OF CORONA STD. PLAN NO. 142.

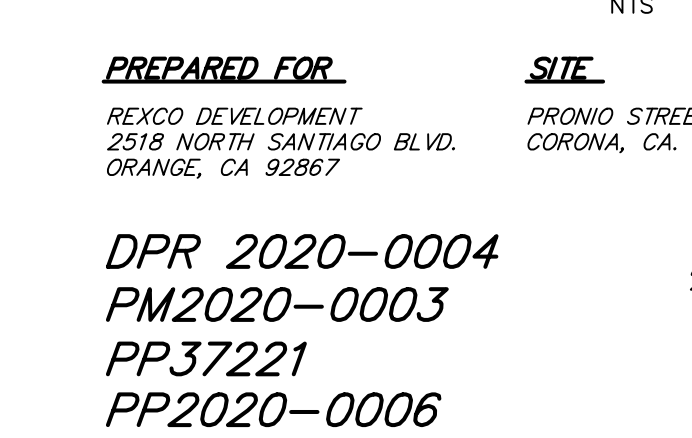
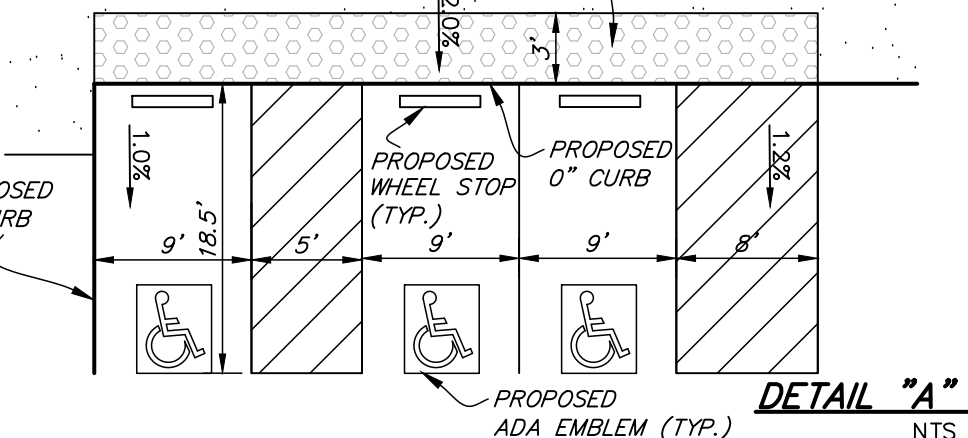
STORM DRAIN CONSTRUCTION NOTES

- 30 CONSTRUCT 18" HDPE STORM DRAIN WITH PIPE BEDDING PER CITY OF CORONA STD. PLAN NO. 406.
- 31 CONSTRUCT 36"x36" CATCH BASIN WITH FLEXSTORM INLET FILTER
- 32 CONSTRUCT UNDERGROUND PIPE STORAGE INFILTRATION SYSTEM
- 33 CONSTRUCT UNDERGROUND PIPE STORAGE INFILTRATION SYSTEM
- 34 CONSTRUCT TRENCH REPAIR PER CITY OF CORONA STD. PLAN NO. 150.
- 35 CONSTRUCT 8" CURB & GUTTER PER CITY OF CORONA STD. PLAN NO. 136.
- 36 CONSTRUCT 8" PVC (SCH40) PIPE.



- ### LEGEND
- BW BACK OF WALK
 - EG EXISTING GRADE
 - FG FINISH GRADE
 - FS FINISH SURFACE
 - TC TOP OF CURB
 - FL FLOW LINE
 - EP EDGE OF PAVEMENT
 - FF FINISH FLOOR
 - PAD PAD GRADE
 - TW TOP OF WALL
 - TF TOP OF FOOTING
 - HP HIGH POINT
 - LP LOW POINT
 - CF CURB FACE
 - TG TOP OF GRATE
 - TRW TOP OF RETAINING WALL
 - EDF EXTRA DEPTH FOOTING
 - INV INVERT OF PIPE
 - TOP OF SLOPE
 - RATE OF SLOPE
 - TOE OF SLOPE
 - EXISTING CONTOUR
 - PROPOSED CONTOUR
 - REMOVAL
 - PROP. AC PAVEMENT
 - EXIST. CONCRETE
 - PROP. EDF
 - PROP. RETAINING WALL
 - EXISTING CURB
 - EXISTING CONCRETE
 - CENTER LINE OF STREET
 - PROPERTY LINE
 - EASEMENT LINE
 - PROPOSED WATER
 - PROPOSED SEWER
 - EXISTING STORM DRAIN
 - EXISTING SEWER
 - EXISTING WATER
 - EXISTING FIRE HYDRANT
 - PROPOSED FIRE HYDRANT
 - HANDICAP PATH OF TRAVEL

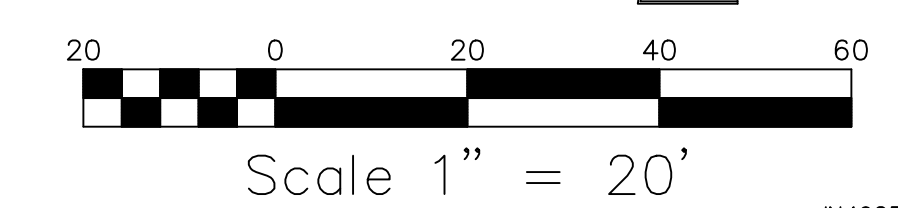
DIG ALERT
DIAL TOLL FREE 811
AT LEAST TWO DAYS BEFORE YOU DIG
UNDERGROUND SERVICE ALERT OF SOUTHERN CALIFORNIA



PREPARED FOR
REXCO DEVELOPMENT
2518 NORTH SANTIAGO BLVD.
ORANGE, CA 92667

SITE
PRONIO STREET
CORONA, CA.

DPR 2020-0004
PM2020-0003
PP37221
PP2020-0006



LAND DEVELOPMENT DESIGN COMPANY, LLC 2313 E. PHILADELPHIA ST., UNIT F ONTARIO, CA 91761 (909) 930-1466 FAX (909) 930-1468 PLANNING • CIVIL • SURVEYING	Designed by KJR	Drawn by JCO	Checked by KJR	BENCH MARK USC&GS B.M. #5316 ELEV. = 907.518 FT	Engineering Planning Fire	Approved by: Savat Khampou City Engineer R.C.E. No. 62019	Date	CITY OF CORONA PRELIMINARY GRADING PLAN PRONIO BUSINESS PARK	Drawing No. JN4925
	PLANS PREPARED UNDER SUPERVISION OF KEVIN J. RICHER R.C.E. No. 43714 Exp. 3-31-23	Reference plans for these improvements	Date By REVISIONS	Scale 1" = 20'	App'd	Date	Sh. 1 of 1		