



Abandoned Vehicles– Can we tow?



Lieutenant Chad Fountain
Sergeant Bryan Snow

October 12, 2021

Traffic Team Staffing

- One Part-Time Parking Enforcement
- Five current Motor Officers- 2 open spots (1-Injured and 1-Open, pending increased patrol staffing)
- One Accident Investigator
- One open Corporal Position

Abandoned vehicles are handled in the order they are received.



Pending Abandoned Vehicles



Currently, we have 90 abandoned vehicles in que to be evaluated(10/4/2021). Abandoned vehicles are handled in the order they are received.

The majority of abandoned vehicles received to the PD are complaint driven (Calls for service or SCF).

Abandoned Vehicle

Definition

Abandonment is presumed if a vehicle is left 72 hours or more, is immobilized on a highway/public right-of-way, lacks critical equipment (windshield, engine, wheels), or is presumed to be a hazard to public health and/or safety. CVC 22651 & 22669

Community Caretaking

What does it mean?

In 2019, Section 22650 required a Community Caretaking Function in order to remove a vehicle. This requires a need to protect public safety such as ensuring the safe flow of traffic, a safety hazard such as leaking fluids, broken glass, or protecting property from theft or vandalism.

Parking Citation

CMC Section 10.20.050:
Parked over 72 hours (#2 on the cite) is the most common section used for abandoned vehicles. This section includes a \$50 fine.



**PARKING CITATION
CITY OF CORONA**

CP 66276

DATE		TIME		<input type="checkbox"/> AM <input type="checkbox"/> PM	
VEH. LIC. #		STATE	MAKE	MODEL	COLOR
TAB YEAR	VIN #:				
LOCATION OF VIOLATION					

X	VIOLATION CODE	VIOLATION DESCRIPTION	FINE
1	10.20.040 (A-J) CMC	Improper Parking	\$50.00
2	10.20.050 CMC	Parked Over 72 Hours	\$50.00
3	10.20.150 CMC	Parked In Alley	\$50.00
4	10.20.160 CMC	Designated Fire Lane	\$85.00
5	10.20.200 CMC	Vehicle For Sale	\$90.00
6	10.20.250(a) CMC	Oversized Vehicle Parking 2:00 am - 5:00 am	\$205.00
7	10.20.250(b) CMC	Non Motorized Vehicle Parking	\$75.00
8	10.22.070 CMC	Permit Parking Only	\$45.00
9	10.24.060 CMC	No Stopping	\$45.00
10	10.24.080(a) CMC	Com Veh. 6,000 lbs Off Truck Route	\$200.00
11	10.24.080(b) CMC	Com Veh. 6,000 lbs Over 2 Hours	\$200.00
12	10.24.090 CMC	Parked Along Painted Curb	\$45.00
13	10.26.020 CMC	Restricted Parking	\$50.00
14	10.28.050 CMC	Handicapped Parking	\$350.00
15	22500(b) CVC	Parking On Crosswalk	\$45.00
16	22500(e) CVC	Blocking Driveway	\$45.00
17	22500(f) CVC	Parked On Sidewalk	\$45.00
18	22502(a) CVC	Parked 18" Away From Curb	\$45.00
19	22514 CVC	Parked Within 15' From Fire Hydrant	\$60.00
20	4000(a)(1) CVC	No Registration/Expired Registration	\$105.00
21	5200(a) CVC	No Or Improper Display Of License Plates	\$90.00
22	5204 CVC	Display Of Tabs	\$90.00



WHAT TO DO ABOUT ABANDONED VEHICLES

STEP 1 — TRAFFIC SECTION

Report Vehicle
See Click Fix
Mobile App

Monday—Thursday
8 am to 5 pm



PD.Traffic@coronaca.gov



(951) 736-2330 option #2

Download the SCF App

Submit 24 Hours a Day, 7 Days a week

****Not monitored 24 hours a day****



The City of Corona's Traffic Section will ask 4 Details:

1SAM567

License Plate



Location



Description of
The Vehicle



What is the Issue and How
long has it been an Issue

Traffic will Check if Vehicle is Stolen

Is This a Reported Stolen Vehicle?

YES

IMMEDIATE
CPD Inspection and Tow

NO

Community Caretaking Factors
Examples: Immediate Hazard/
Safety Concern, Unable to
secure, Theft/Vandalism

YES

CPD Call for Service
Vehicle Inspection and Tow
truck requested

NO

CPD Abandoned Vehicle Request Generated
Parking Enforcement responds as requests
are created





STEP 2— Parking Enforcement



What Happens When an Abandoned Vehicle Request is Made?

An abandoned vehicle request is generated by the Traffic Administrative Assistant and placed on CPD's Abandoned Vehicle Log

On the Day of Inspection, Parking Enforcement will:

1SAM567

Check
License
Plate



Check for any Community Caretaking Factors

Examples:

Is there an immediate Hazard or Safety Concern?
Is it susceptible to theft or vandalism?
Does it Block the Flow of Traffic?



Place a 72-hour yellow warning tag and mark the area around the vehicle tires

Has this vehicle been re-evaluated as stolen or does it meet requirements under Community Caretaking

YES

Parking Enforcement will Request a tow truck to Remove vehicle from street.

NO

Parking Enforcement will respond again after 72-hours to check for any movement of the vehicle

Has the vehicle moved?

YES

Service Request will be Closed

NO

Parking Enforcement may write a citation for A 72-hour violation (CMC 10.20.050)





RV Enforcement



Can I Park my Recreational Vehicle in front of my Home?

Yes, if you obtain an RV permit prior to parking on the street

How Can I Obtain an RV Permit?

Call the Police Traffic Section
(951) 736-2330 option #2
Monday—Thursday
8am to 5pm

**What Happens if I don't get a permit
and a complaint is made?**

A call for service is generated by the Traffic Administrative
Assistant for a patrol officer to respond during the violation times

Once the call has been dispatched, the Patrol Officer will:

1SAM567

Check
License
Plate



Check for any Community Caretaking Factors

Examples:

Is there an immediate Hazard or Safety Concern?
Is it susceptible to theft or vandalism?
Does it Block the Flow of Traffic?

Has this vehicle been re-
evaluated as stolen or does it
meet requirements under
Community Caretaking

YES

The Patrol Officer will
request a tow truck to
remove vehicle from street.

Service Request will be Closed

NO

The Patrol Officer may write a citation
for an oversize vehicle violation
(CMC 10.20.250(A))

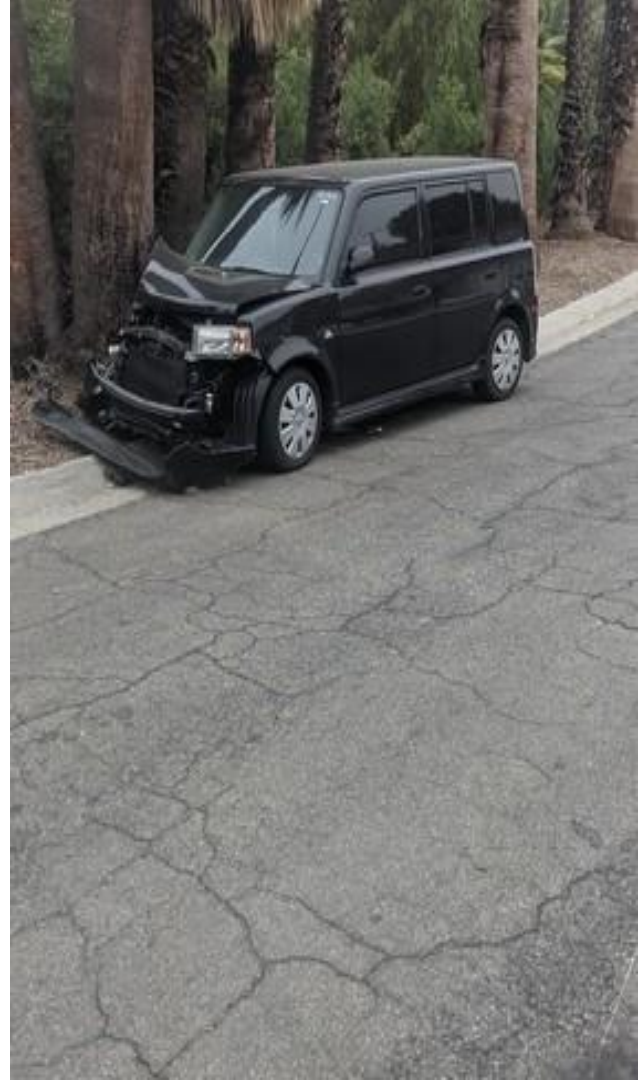
For more information about RV permits:
See CMC 10.20.250(D)



Yes, this car can be towed.

Wrecked/Non-op

This vehicle meets the
“Community Caretaking
criteria because it is parked
on the curb and inoperable.”



Not Towable

Although this vehicle is dirty and does not appear to have moved, it is not towable based on “Community Caretaking” criteria.



Towable or Not-Towable Examples

Not Towable



Towable



QUESTIONS?



Chad.Fountain@CoronaCA.gov

Bryan.Snow@CoronaCA.gov



www.CoronaCA.gov



www.CoronaCA.gov

