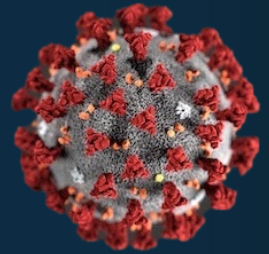




COVID-19 UPDATE



Brian Young
Fire Chief

October 6, 2021

20,805

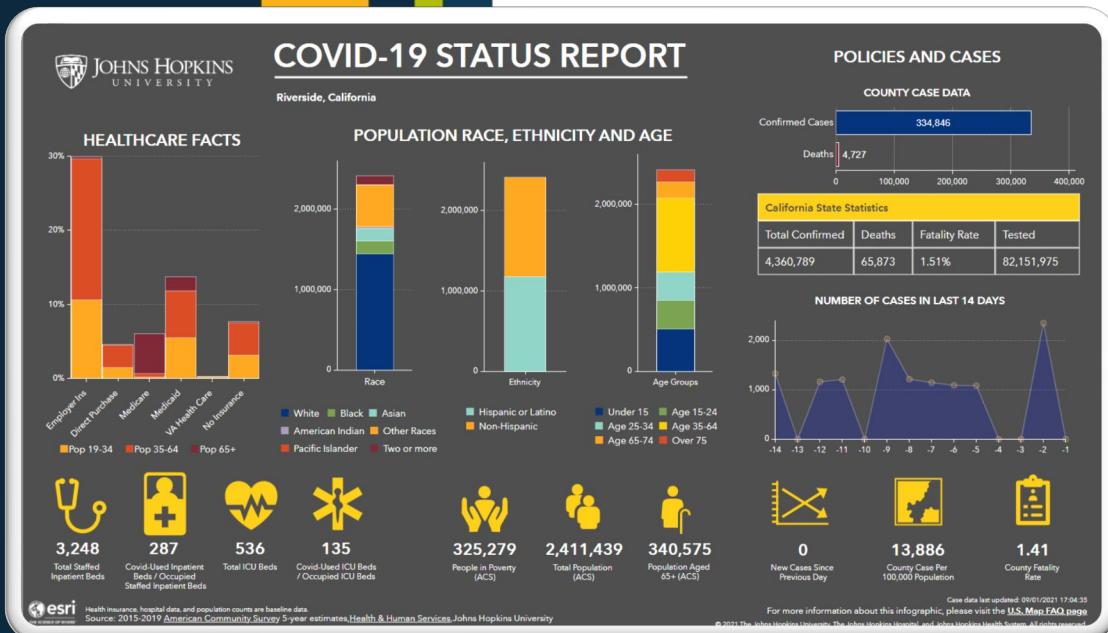
Corona cases

20,311

Corona recoveries

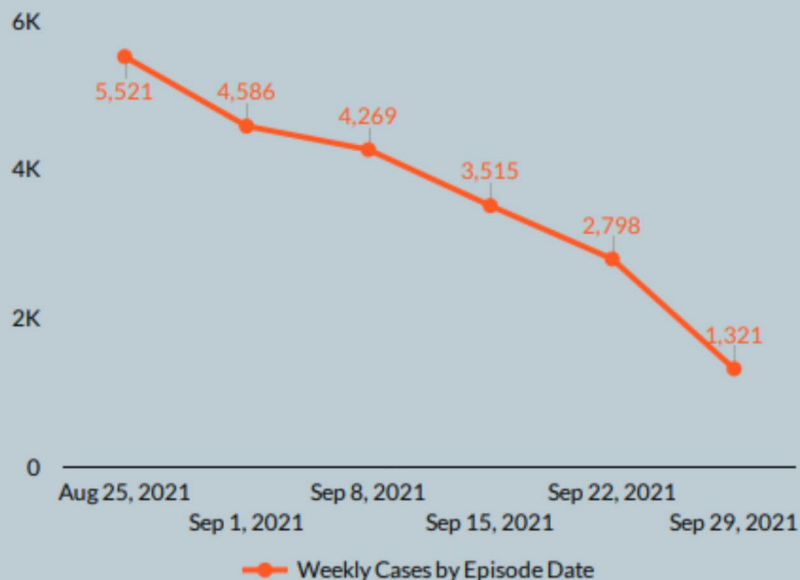
293

Corona fatalities



RIVERSIDE COUNTY COVID-19 CASES

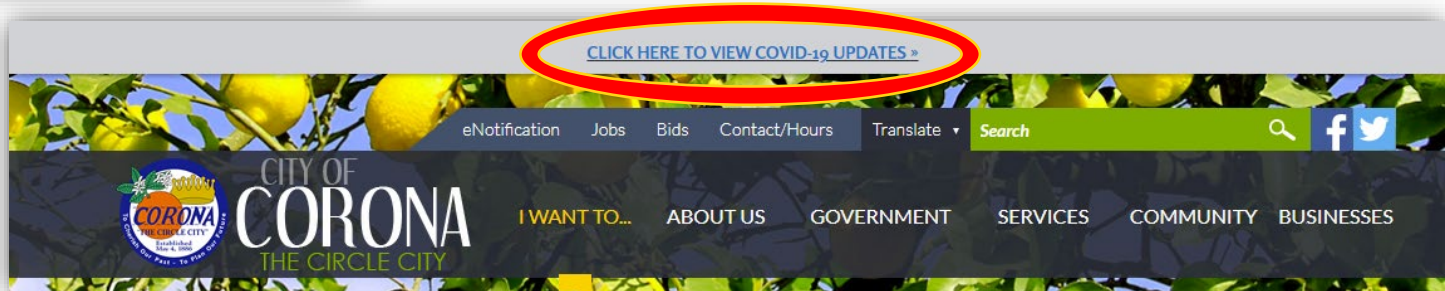
Recent COVID-19 in Riverside County



Testing in Corona



Day	Time	Location	District
Monday	7:30AM-2:30PM	Buena Vista Park	4
Tuesday	7:30AM-2:30PM	Santana Park	5
Wednesday	7:30AM-2:30PM	Parkview Park	1
Thursday	7:30AM-2:30PM	City Hall	3
Friday	7:30AM-2:30PM	Butterfield Park	2



Vaccination

City of Corona *-and-* adjacent communities

<https://rivcoph.org/COVID-19-Vaccine-with-Registration>

Pfizer booster dose of include those who received series at least 6 months ago and are either:

- 65 and over
- Residents of long-term care facilities
- 18 to 64 with underlying medical conditions
- 18 to 64 with high-risk occupations



Vaccine

Riverside County

- 7.2% Partially vaccinated
- 58.4% Fully vaccinated
- 47,108 Booster (3rd dose)

Corona

- 8.7% Partially vaccinated
- 63.0% Fully vaccinated

2,850,352

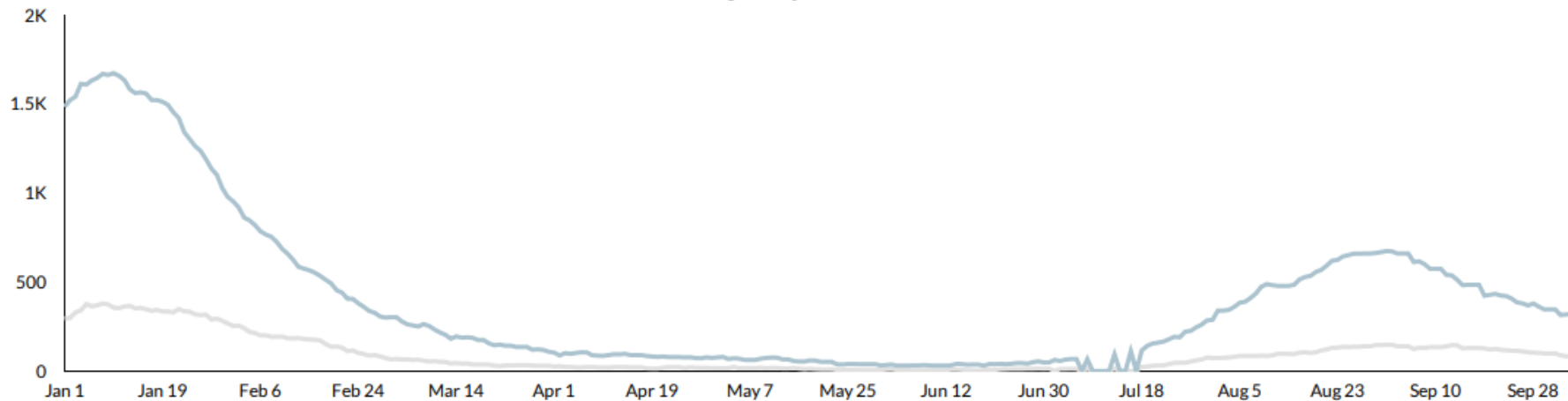


Hospitalizations

Riverside County



COVID-19 Daily Hospitalizations and ICU



85

COVID-19 Daily ICU Beds

COVID-19 Daily Hospitalizations

321

Stay Informed

CALL US, EMAIL US, OR VISIT OUR WEBSITE FOR THE LATEST INFO!

Call: (951) 817-5800 | Text: (833) 482-0029

COVID19info@CoronaCA.gov

www.CoronaCA.gov/COVID-19

TO RECEIVE EMAIL NOTIFICATIONS, SIGN UP AT CORONACA.GOV/SUBSCRIBE