

City of Corona

*400 S. Vicentia Ave.
Corona, CA 92882*

Parks and Recreation Commission Meeting Agenda

Tuesday, October 12, 2021

Council Chambers - 6:00 PM



Chair, Michele Wentworth
Vice Chair, Dominick Verrette
Commissioner Tom Munoz
Commissioner Breck Weiny
Commissioner Matthew Olsen

CALL TO ORDER**PLEDGE OF ALLEGIANCE****ROLL CALL****MEETING MINUTES**

1. **MINUTES** - [Approval of the Parks and Recreation Commission Special Meeting Minutes on August 2, 2021.](#)

COMMUNICATIONS FROM THE PUBLIC

Persons wishing to address the Parks and Recreation Commission on items listed on the agenda are requested to identify themselves and state the matter on which they wish to comment. No action will be taken on matters not listed on the agenda. The Commission will appreciate your cooperation in keeping your comments brief.

YOUTH UPDATE**DISCUSSION ITEMS**

Director's Report

2. **REPORT** - [Director's Report](#)

Park Equipment Standards

3. **REPORT** - [Park Equipment Standards](#)

Playground Shade Options

4. **REPORT** - [Playground Shade Options](#)

CONSENT CALENDAR

5. **REPORT** - [Developer Impact Fee Fund Balance/Bond Repayment For June, July, August 2021 \(Receive and File\)](#)

COMMISSION MEMBER'S REPORTS AND COMMENTS**ANNOUNCEMENTS**

ADJOURNMENT

Corona City Hall Online, All the Time- www.coronaca.gov

NOTICE TO THE PUBLIC:

If you challenge any items on the agendas in court, you may be limited to raising only those issues you or someone else raised at the public hearing described in this notice, or in written correspondence delivered to the Parks and Recreation Commission at or prior to this public hearing.

Agendas for all Parks and Recreation Commission meetings are posted at least 72 hours prior to the meeting in the breezeway display case at City Hall. A complete agenda packet is available for public inspection during business hours at the Library and Recreation Services Department. Any materials relating to an item on the agenda which are distributed to all, or majority of all, members of the Parks and Recreation Commission after the posting of the agenda will also be available at the same time for public inspection during business hours at the Library and Recreation Services Department.

In compliance with the Americans with Disabilities Act, if you need special assistance to participate in this meeting, please contact the ADA Coordinator at (951) 736-2235. Notification 48 hours prior to the meeting will enable the City to make reasonable arrangements to ensure accessibility to this meeting. [28 CFR 35.102-35.104 ADA Title II].

MEETING IS BEING RECORDED

City of Corona

*400 S. Vicentia Ave.
Corona, CA 92882*

Parks and Recreation Commission Minutes - Final

Monday, August 2, 2021

Special Meeting

Council Chambers- 3:30 p.m.



**Chair, Michele Wentworth
Vice Chair, Dominick Verrette
Commissioner Tom Munoz
Commissioner Breck Weiny
Commissioner Matthew Olsen**

CALL TO ORDER

Chair Wentworth called the meeting to order at 3:30 p.m.

PLEDGE OF ALLEGIANCE

Chair Wentworth led the pledge of allegiance.

ROLL CALL

Commissioners present: Munoz, Olsen, Verrette, Weiny, and Wentworth

Note: Commissioner Olsen was appointed by Council Member Jim Steiner at the July 21, 2021 City Council meeting.

TRAILS MASTER PLAN- PHASE I UPDATE

Dr. Turner presented the Trails Master Plan- Phase I overview. The purpose and goals of the plan were discussed. The plan will be a strategic and comprehensive planning document for residents, staff, and stakeholders. The plan will guide the creation of a multi-modal trail connectivity.

A map of the existing trails and paths were reviewed along with five types of trail designs. Type 1 is a multi-use path, Type 2, a recreation path, Type 3 is a multi-use trail, Type 4 is a recreational trail, and Type 5 is a nature trail. As part of the planning process, community meetings were held.

The Trails Master Plan will be presented to City Council at the Committee of the Whole meeting on August 11th.

The Trails Master Plan Phase II goals include creating the culture around trails, setting standards and branding, identifying cost and funding sources, and addressing trail impacts to the neighborhoods particularly traffic and trash. Short and long term goals will be developed in the plan, especially for City owned property along the trail and how the land will be developed. Lastly, surveys and outreach will be conducted to gain input from stakeholders and the community.

Overall, the Commissioners had comments regarding parking, prioritization of trails, using parks as staging areas, and other suggestions that will be incorporated into the plan. The Commission was pleased with the Trails Master Plan Phase I and are excited to see if moving forward with the development of Phase II.

1. Corona Trails Master Plan - Phase I.

ADJOURNMENT

The meeting was adjourned at 4:25 p.m.

The regular Parks and Recreation meeting scheduled for August 10, 2021 is cancelled.

The next meeting will be held on September 14, 2021.

Corona City Hall Online, All the Time- www.coronaca.gov

NOTICE TO THE PUBLIC:

If you challenge any items on the agendas in court, you may be limited to raising only those issues you or someone else raised at the public hearing described in this notice, or in written correspondence delivered to the Parks and Recreation Commission at or prior to this public hearing.

Agendas for all Parks and Recreation Commission meetings are posted at least 72 hours prior to the meeting in the breezeway display case at City Hall. A complete agenda packet is available for public inspection during business hours at the Library and Recreation Services Department. Any materials relating to an item on the agenda which are distributed to all, or majority of all, members of the Parks and Recreation Commission after the posting of the agenda will also be available at the same time for public inspection during business hours at the Library and Recreation Services Department.

In compliance with the Americans with Disabilities Act, if you need special assistance to participate in this meeting, please contact the ADA Coordinator at (951) 736-2235. Notification 48 hours prior to the meeting will enable the City to make reasonable arrangements to ensure accessibility to this meeting. [28 CFR 35.102-35.104 ADA Title II].

MEETING IS BEING RECORDED



Director's Report



Abbie Lenning

October 12, 2021



CITY OF CORONA **COMMUNITY** SERVICES



PARKS | RECREATION | LIBRARY | ADMINISTRATION



Fall Workshop Recap

Wednesday, September 29, 2021

- Community Tree Planting Volunteer Program
- Trails Master Plan – Phase II
- Expanded Access to the Library's Heritage Room Collection

Fall/Winter Event Schedule

- **Halloweenweekend | October 15 – 17**
Treat Trail – 10/16
Family Movie – 10/16
Escape Room by OBCTheater – 10/15 – 10/17
- **Holiday Lighting | December 5**



CITY OF CORONA PRESENTS

HALLOWEENKEND

TREAT
TRAIL

Free Fun, Goodies, & Treats
Saturday, Oct. 16th • 5-8 PM

FAMILY
MOVIE

Frankenweenie (PG)
Saturday, Oct. 16th • 6:30 PM

ESCAPE
ROOM

Hosted By OBCTheater
Oct. 15th-17th • Ticketed Event



Community Clean-Up Schedule

Corona Beautiful

COMMUNITY CLEANUP
VOLUNTEER OPPORTUNITIES

GRIFFIN PARK

804 GRIFFIN WAY
SATURDAY 10/23

9AM-11AM
ALL AGES

REGISTER:
[BIT.LY/3LMIBQC](https://bit.ly/3LMIBQC)



15 FREEWAY

MAGNOLIA TO ONTARIO
SATURDAY 11/13

9AM-12PM
16+

REGISTER:
[BIT.LY/2ZRK8IP](https://bit.ly/2ZRK8IP)



- **Griffin Park | October 23 | 9AM – 11AM**
2804 Griffin Way
All ages
- **15 Freeway | November 13 | 9AM – 12PM**
Magnolia to Ontario
Ages 16 years and older

Graffiti Abatement Update





Homeless Mitigation Update



Park Ranger Program Update

- Fully staffed Park Ranger Program expected December 2021
- Fully equipped Ranger Station housed at City Hall
- Collaboration with Corona Police Department to get staff PC 832 trained

Park Re-Opening Process



QUESTIONS?



951-817-5824



Abigail.Lenning@CoronaCA.gov



www.CoronaCA.gov





Park Equipment Standards



Tracy Martin

October 12, 2021



Park Equipment Standards

Embody Community Vibrancy & Maintain
Functionality and Durability

Barbecue Grills & Bins

Rank from 1-3 or 1-4
(1 = Best and 3/4 = Worst)

A



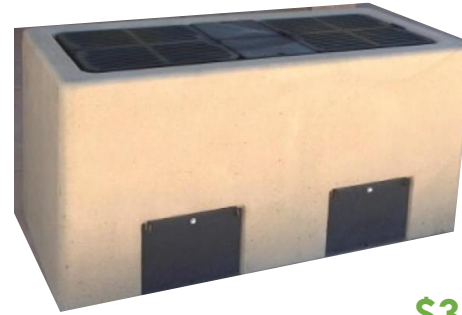
\$299

B



\$354

C



\$3,450

A



\$345

B



\$621

C



\$1,255

D



\$1,162

Bicycle Racks

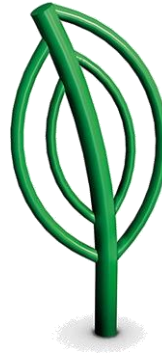
Rank from 1 to 5
(1 = Best and 5 = Worst)

A



\$338

B



\$385

C



\$1,030

D



\$729

E



\$371

Drinking Fountains

Rank from 1 to 5
(1 = Best and 5 = Worst)

A



\$8,595

B



\$7,180

C



\$3,270

D



\$5,160

E



\$4,585

Monument/Entry Signs

Rank from 1 to 4
(1 = Best and 4 = Worst)

A



\$7,760

B



C



D



\$1,565 - \$5,630

Picnic Tables

Rank from 1 to 4
(1 = Best and 4 = Worst)

A



\$1,657

B



\$1,516

C



\$2,548

D



\$3,216

Benches

Rank from 1 to 4
(1 = Best and 4 = Worst)

A



\$1,437

B



\$1,585

C



\$2,608

D



\$1,208

Trash Receptacles

Rank from 1 to 6
(1 = Best and 6 = Worst)

A



\$1,137

B



\$1,100

C



\$951

D



\$1,249

E



\$814

F



\$1,527

Rules Signage

Rank from 1 to 12
(1 = Best and 12 = Worst)



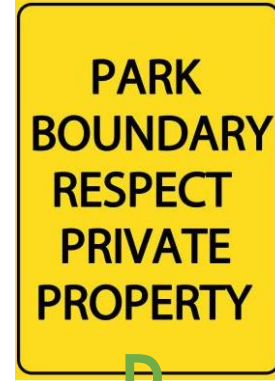
A



B



C



D



E



F



G



H



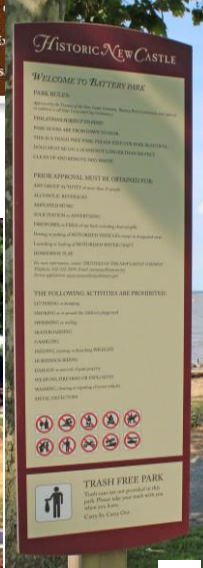
I



J



K



L

QUESTIONS?



951-817-5880



Tracy.Martin@CoronaCA.gov



www.CoronaCA.gov





www.CoronaCA.gov





Playground Shading Options



Tracy Martin

October 12, 2021

Discussion Topics

Playgrounds & Shade:

- ☀️ Sun effects & Corona's portfolio
- ☀️ Best practices & community desires
- ☀️ Various strategies

Seeking Recommendations on:

- ☀️ Coverage levels & shade types
- ☀️ Implementation timeline
- ☀️ Future guidelines



A bright sun is shining in the upper left corner of a clear blue sky, creating a lens flare effect. Several white, fluffy clouds are scattered across the sky, with a large one in the upper right and another in the lower center.

Here comes the sun...

**It has many benefits but can
also be harmful.**

Negative Effects



People

- Eye Damage
- Skin Damage
- Heat Illness



Equipment

- Cracking
- Fading
- Shortens Useful Life

A Tale of Two Sun Exposures

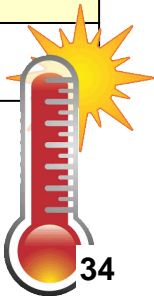


Mean Monthly and Annual Temperatures 1949 - 2006




Location	Average Max.	Average Min.	Average	High	Average Max.	Days Over 90°
Austin, TX	79.0°	58.1°	68.6°	110°	71.5°	112
Dallas, TX	76.7°	56.4°	66.6°	112°	69.8°	102
Las Vegas, NV	79.8°	54.4°	67.1°	117°	70.0°	134
Los Angeles, CA	74.9°	56.6°	65.8°	112°	68.9°	24
Phoenix, AZ	85.9°	59.9°	72.9°	122°	76.9°	168
Riverside, CA	78.9°	50.4°	64.7°	117°	66.7°	95
San Diego, CA	70.5°	57.2°	63.9°	111°	67.2°	3

Western Regional Climate Center website:

https://wrcc.dri.edu/Climate/comp_table_show.php?stype=temp_means



Corona's Playgrounds

Full Shade	Partial Shade	Full Sun
		
Shade Structure	Large Canopy / Established Trees	No Structures or Trees
0	11	18
0%	38%	62%

Three vertical bars of different colors (light green, dark blue, and yellow) are positioned on the left side of the slide.

Best Practices & Community Goals

Best Practices – S.A.F.E. Playgrounds

National Program for Playground Safety



Appropriate Environments:

- Plan for Child Development Characteristics
- **Offer Suitable Environmental Conditions**
- Have Inclusive Spaces
- Provide Nature-Based Outdoor Environments

Best Practices – Sun Exposure

Questions to Ask	If Yes, Potential Mitigation
Is sun exposure sufficient to heat exposed bare metal slides, platforms, steps and surfacing enough to burn children?	Bare metal slides, platforms and steps should be <u>shaded or located out of direct sun.</u> Provide warnings that equipment and surfacing exposed to intense sun can burn.
Will children be exposed to the sun during the most intense part of the day?	Consider <u>shading the playground</u> or providing shaded areas nearby.

Handbook for Public Playground Safety, 2010 Edition
U.S. Consumer Product Safety Commission

Strategic Plan Goals



3. Sound Infrastructure

Sustain high quality service delivery by investing in public infrastructure, including parks, buildings, equipment, roads, and technology.

- Unified vision for enhancement, maintenance and expansion of parks
- Percent of residents rating quality of public parks as good or excellent
- Development of Parks and Recreation Master Plan



4. Safe Community

Protect our quality of life by ensuring the community is safe and clean.

- Enhance the experience of residents, business owners and visitors
- Rating overall appearance of Corona as good or excellent
- Total number of trees in City owned parks and rights-of-way

Community Desires

Please add shade tarps to these beautiful playgrounds!

This is so awesome. We do need more shade 🙏

Why is there never any shade at playgrounds!?!

It's nice to have a new park but most parks in Eastvale and Norco have shading over the equipment. Why can't we have this?

Is there a way to run a fundraiser for shade?

Looks great! Just needs some shade and some benches around the park.

Why is it that almost all parks have hardly any shade over the playgrounds area?? 🙄

Nice but no shade?

Hope you make some shade!

Can we please have a huge sail over the entire playground?

How about adding shade so these parks are actually useable.

Where is the cover for hot sunny days?

Any shade planned this time?

But no shade? So it can be used for only a few months out of the year. Shade is a must.

This is so awesome. Please incorporate shade!!

Shade, hot or heat
were used
249 times
in 249 survey responses
on Lincoln Park

Three vertical bars of different colors (light green, dark blue, and yellow) are positioned on the left side of the slide.

Coverage and Cost

Shade Options



Shade Structures

- Artificial materials
- Increased cost
- Full / partial coverage options
- Maintenance / vandalism concerns
- Replacement costs



Trees

- Natural esthetic
- Lower cost
- Environmental benefits
- Reduced temperatures
- Not most-effective coverage
- Leaves and debris
- Urban Forest Master Plan



Combination / Flexible

- Balances natural / artificial appearance
- Scalable
- Not full coverage
- Target specific areas
- Overall cooling effect for spectators, too

Shade Structure Only



Lincoln Park

Large, established oak trees



Mountain Gate Park



Village Park

Size: 3,850 – 6,500 sf

Est. Cost: \$85,000 - \$235,000

Cost / SF: \$22 - \$40; \$33 average

Trees Only



Village Park



Mountain Gate Park



Santana Park



Lincoln Park

48" Box: \$5,000 / tree

84" Box: \$20,000 / tree

Est. Cost: \$10,000-\$80,000

Combination / Flexible Option



Lincoln Park

Shade Structures: \$30,000

Structure Sizes: 2 - 14' x 14'

Est. Tree Cost: \$20,000 - \$80,000



Santana Park

Shade Structures: \$108,000

Structure Sizes: 50' x 32' x 48' x 37'
14' x 14'

Est. Tree Cost: \$10,000 - \$40,000

Three vertical bars of different colors (light green, dark blue, and yellow) are positioned on the left side of the slide.

Moving Forward

Options for Consideration

Cost Summary & Discussion



Let's
Talk!

Park	Playground Size (SF)	Structure Only	Trees Only	Combination
Lincoln	6,440	\$235,000	\$20,000 - \$80,000	\$50,000 - \$110,000
Village	3,860	\$153,000	\$20,000 - \$80,000	
Mountain Gate	3,994	\$85,000	\$10,000 - \$40,000	
Santana	6,320	~\$250,000-\$300,000	\$20,000 - \$80,000	\$128,000 - \$148,000
Total:	20,614	\$723,000 - \$773,000	\$70,000 - \$280,000	\$178,000 - \$258,000

Discussion



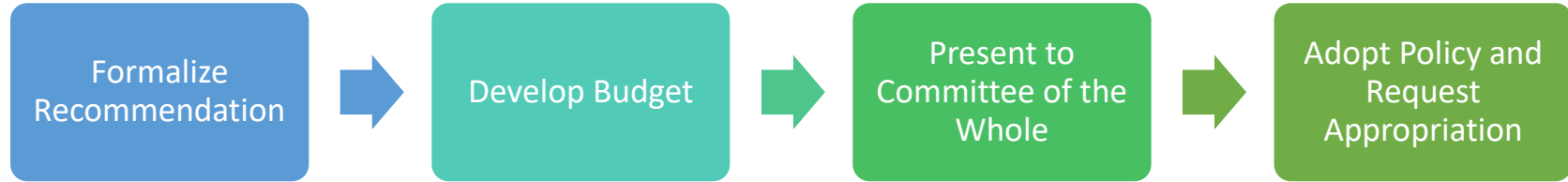
Timeline

- ☀ No immediate action – as playground equipment is replaced
- ☀ Low Impact: 3 per year for 10 years
- ☀ Moderate Impact: 5-6 per year for 5 years
- ☀ Aggressive Impact: 10 per year for 3 years

Potential Policy Recommendations

- ☀ Upcoming Park Master Plan
- ☀ Preferred types of shade
- ☀ Levels of coverage
- ☀ Budget

Next Steps



QUESTIONS?



951-817-5880



Tracy.Martin@CoronaCA.gov



www.CoronaCA.gov





www.CoronaCA.gov





Park Bond Loan Repayment Information
Includes revenue activity through 06/30/2021
Subject to year-end audit

Park Bond Loan Repayment Balance 07/01/2020	\$ 8,826,553.84
--	------------------------

Less revenue received FY 2021:

2020	July	1,143.36
	August	-
	September	590.49
	October	755.85
	November	17,423.49
	December	572,250.00
2021	January	-
	February	6,508.26
	March	4,593.06
	April	278.04
	May	192,607.97
	June	76,765.40
	June	(572,250.00)

Moved December revenue to deposit. Amount to be recognized as revenue in a future fiscal year, based on number of units constructed (Arantine Hills).

Preliminary total revenue received FY 2021	300,665.92	<i>[See Notes]</i>
---	-------------------	--------------------

Estimated Balance at Fiscal Year End 6/30/2021	\$ 8,525,887.92
---	------------------------

Total Available from FY 2020 Loan Repayment	\$ 449,168.02
FY 2022 CIP - Playground Equipment Border & Fairview	(250,000.00)
FY 2022 CIP - Lincoln Park Fitness Equipment	(100,000.00)
Total from FY 2021 Loan Repayment	300,665.92
Net Available Balance (Reserve for 06/30/21)	\$ 399,833.94

- Notes:
1. Amount subject to change through the fiscal year for items such as interest allocation, refunds of fees, etc.
 2. Revenue received is applied to loan balance at Fiscal Year End (June 30).
 3. Revenue applied to loan balance to be available for use in following fiscal year, (FY 2021 to be available for use in FY 2022).
 4. Potential for additional year-end adjustments to occur through audit process.



Development Impact Fees - Fund Balances FY 2021
Parks and Recreation related funds - activity through 06/30/2021
Subject to year-end audit

Fund 215 - Public Meeting Facilities Fund		<i>See Notes on page 3</i>
Beginning Fund Balance 7/1/2020	\$ 297,278	
Preliminary Revenue Actuals FY 2021	42,809	<i>Updated</i>
Expenditures Budget		
Administrative Services Charge	(530)	
Capital Improvement Projects		
Citywide Facilities Inventory	(4,000)	
Citywide Fee Review	(2,832)	
Knowleton Property Acquisition	(185,899)	
Parks Facilities/Amenities Inventory	(17,301)	
Vicentia Activity Center	(26,636)	
Total Expenditures Budget	(237,197)	
Less Transfers Out	(56,171)	
Less Long Term Receivables/Deposits	(23,599)	
Estimated Fund Balance 06/30/2021	\$ 23,120	
Change from prior month	\$ (44,096)	
Available Fund Balance 06/30/2021	\$ 23,120	
Change from prior month	\$ 1,478	



Development Impact Fees - Fund Balances FY 2021
Parks and Recreation related funds - activity through 06/30/2021
Subject to year-end audit

Fund 216 - Aquatics Center Fund		<i>See Notes on page 3</i>
Beginning Fund Balance 7/1/2020	\$	302,009
Preliminary Revenue Actuals FY 2021		26,669 Updated
Expenditures Budget		
Administrative Services Charge	(242)	
Capital Improvement Projects		
Aquatic Improvements	(100,236)	
Citywide Facilities Inventory	(5,645)	
Citywide Fee Review	(1,082)	
Total Expenditures Budget		(107,205)
Less Transfers Out		(34,785)
Less Long Term Receivables/Deposits		(14,613)
Estimated Fund Balance 06/30/2021	\$	172,077
Change from prior month	\$	(29,683)
Available Fund Balance 06/30/2021	\$	172,077
Change from prior month	\$	2,941

City of Corona

Parks and Recreation Commission

Meeting Date: 10/12/2021

June 2021 information - no Aug. meeting



Development Impact Fees - Fund Balances FY 2021

Parks and Recreation related funds - activity through 06/30/2021

Subject to year-end audit

Fund 217 - Parks & Open Space Fund		<i>See Notes on page 3</i>
Beginning Fund Balance 7/1/2020	\$	7,863,229
Preliminary Revenue Actuals FY 2021		(28,274) Updated
<i>Negative, due to adjustments for gains/losses on investments (book entries) and moving revenue to deposit. Amount to be recognized in a future fiscal year, based on number of units constructed (Arantine Hills).</i>		
Plus Transfers In		90,955
Expenditures Budget		
Administrative Services Charge	(11,629)	
Capital Improvement Projects		
Auburndale Amenities	(630,640)	
Griffin Park Enhancements	(716,337)	
Knowleton Property Acquisition	(1,884,845)	
Lincoln Park Playground Equipment	(2)	
Mountain Gate Playground Equipment	(75,063)	
Parks Facilities/Amenities Inventory	(17,494)	
Parks Improvements	(2,898,035)	
Skyline Property Acquisition	(429,210)	
Skyline Trail	(55,000)	
Total Expenditures Budget		(6,718,254)
Less Long Term Receivables/Deposits		(981,500)
Estimated Fund Balance 06/30/2021	\$	226,156
Change from prior month	\$	(497,769)
Available Fund Balance 06/30/2021	\$	226,156
Change from prior month	\$	(111,021)

Notes:

1. Budget amount for expenditures may include carryover funding from prior fiscal year.
2. Positive numbers = increases fund balance. Negative numbers = decreases fund balance.
3. Available Fund Balance = available to appropriate, already considers authorized expenditure budget.
4. Estimated Fund Balance 06/30/21 = Potential year-end fund balance, if all revenues received.



Park Bond Loan Repayment Information
Includes revenue activity through 07/31/2021
Subject to FY 2021 year-end audit

Park Bond Loan Repayment Balance 07/01/2021	\$ 8,525,887.92
--	------------------------

Less revenue received FY 2022:

2021	July	13,017.47
	August	
	September	
	October	
	November	
	December	
2022	January	
	February	
	March	
	April	
	May	
	June	
	June	

Preliminary total revenue received FY 2022	13,017.47	[See Notes]
--	-----------	-------------

Estimated Balance at Fiscal Year End 6/30/2022	\$ 8,512,870.45
---	------------------------

Total Available from FY 2020 Loan Repayment	\$ 449,168.02
FY 2022 CIP - Playground Equipment Border & Fairview	(250,000.00)
FY 2022 CIP - Lincoln Park Fitness Equipment	(100,000.00)
Total Available from FY 2021 Loan Repayment	300,665.92
Net Available Balance (Reserved for 06/30/21)	\$ 399,833.94

- Notes:
1. Amount subject to change through the fiscal year for items such as interest allocation, refunds of fees, etc.
 2. Revenue received is applied to loan balance at Fiscal Year End (June 30).
 3. Revenue applied to loan balance to be available for use in following fiscal year, (FY 2022 to be available for use in FY 2023).
 4. Potential for additional year-end adjustments to occur through audit process.



Development Impact Fees - Fund Balances FY 2022
Parks and Recreation related funds - activity through 07/31/2021
Subject to FY 2021 year-end audit

Fund 215 - Public Meeting Facilities Fund		<i>See Notes on page 3</i>
Estimated Beginning Fund Balance 7/1/2021	\$ 23,120	
Add continuing projects	25,894	
Add Long Term Receivables/Deposits	23,599	
 Estimated Revenues FY 2022	 79,826	
 Expenditures Budget		
Administrative Services Charge	(658)	
Capital Improvement Projects		
Citywide Facilities Inventory	(4,000)	
Citywide Fee Review	(2,832)	
Parks Facilities/Amenities Inventory	(1,826)	
Vicentia Activity Center	(17,236)	
Total Expenditures Budget	(26,552)	
 Less Long Term Receivables/Deposits	 (23,599)	
Estimated Fund Balance 06/30/2022	\$ 102,288	
Change from prior month	N/A	
 Available Fund Balance 07/31/2021	 \$ 27,023	
Change from prior month	3,903	



Development Impact Fees - Fund Balances FY 2022
Parks and Recreation related funds - activity through 07/31/2021
Subject to FY 2021 year-end audit

Fund 216 - Aquatics Center Fund		<i>See Notes on page 3</i>
Estimated Beginning Fund Balance 7/1/2021	\$ 172,077	
Add continuing projects	106,963	
Add Long Term Receivables/Deposits	14,613	
 Estimated Revenues FY 2022	 50,574	
 Expenditures Budget		
Administrative Services Charge	(593)	
Capital Improvement Projects		
Aquatic Improvements	(100,236)	
Citywide Facilities Inventory	(5,645)	
Citywide Fee Review	(1,082)	
Total Expenditures Budget	(107,556)	
 Less Long Term Receivables/Deposits	 (14,613)	
Estimated Fund Balance 06/30/2022	\$ 222,058	
Change from prior month	N/A	
 Available Fund Balance 07/31/2021	 \$ 172,999	
Change from prior month	\$ 922	

City of Corona

Parks and Recreation Commission

Meeting Date: 10/12/2021

July 2021 information - no Sept. meeting



Development Impact Fees - Fund Balances FY 2022

Parks and Recreation related funds - activity through 07/31/2021

Subject to FY 2021 year-end audit

Fund 217 - Parks & Open Space Fund		<i>See Notes on page 3</i>
Estimated Beginning Fund Balance 7/1/2021	\$	226,156
Add continuing projects		3,751,691
Add Long Term Receivables/Deposits		981,500
Estimated Revenues FY 2022		706,088
Expenditures Budget		
Administrative Services Charge	(1,881)	
Capital Improvement Projects		
Auburndale Amenities	(630,640)	
Butterfield Park Design	(36,000)	
Griffin Park Enhancements	(135,462)	
Lincoln Park Playground Equipment	(2)	
Mountain Gate Park Shade	(160,000)	
Mountain Gate Playground Equipment	(30,533)	
Parks Facilities/Amenities Inventory	(2,020)	
Parks Improvements	(2,898,035)	
Parks Master Plan	(100,000)	
Skyline Trail	(55,000)	
Total Expenditures Budget		(4,049,572)
Less Long Term Receivables/Deposits		(981,500)
Estimated Fund Balance 06/30/2022	\$	634,363
Change from prior month		N/A
Available Fund Balance 07/31/2021	\$	(91,420)
Change from prior month	\$	(317,576)

Temporarily negative due to 06/30/2021 adjustment (moved revenue to deposit). With new projects approved for FY 2022, fund balance is negative. Will monitor and adjust at mid-year, if needed.

Notes:

1. Budget amount for expenditures may include carryover funding from prior fiscal year.
2. Positive numbers = increases fund balance. Negative numbers = decreases fund balance.
3. Available Fund Balance = available to appropriate, already considers authorized expenditure budget.
4. Estimated Fund Balance 06/30/22 = Potential year-end fund balance, if all revenues received.
5. Beginning fund balances are estimated as year-end process/audit for FY 2021 are still in progress.



Development Impact Fees - Fund Balances FY 2022
Parks and Recreation related funds - activity through 08/31/2021
Subject to FY 2021 year-end audit

Fund 215 - Public Meeting Facilities Fund		<i>See Notes on page 3</i>
Estimated Beginning Fund Balance 7/1/2021	\$ 23,120	
Add continuing projects	25,894	
Add Long Term Receivables/Deposits	23,599	
 Estimated Revenues FY 2022	 79,826	
 Expenditures Budget		
Administrative Services Charge	(658)	
Capital Improvement Projects		
Citywide Facilities Inventory	(4,000)	
Citywide Fee Review	(2,832)	
Parks Facilities/Amenities Inventory	(1,826)	
Vicentia Activity Center	(17,236)	
Total Expenditures Budget	(26,552)	
 Less Long Term Receivables/Deposits	 (23,599)	
Estimated Fund Balance 06/30/2022	\$ 102,288	
Change from prior month	\$ -	
 Available Fund Balance 08/31/2021	 \$ 32,752	
Change from prior month	\$ 5,729	



Development Impact Fees - Fund Balances FY 2022
Parks and Recreation related funds - activity through 08/31/2021
Subject to FY 2021 year-end audit

Fund 216 - Aquatics Center Fund		<i>See Notes on page 3</i>
Estimated Beginning Fund Balance 7/1/2021	\$ 172,077	
Add continuing projects	106,963	
Add Long Term Receivables/Deposits	14,613	
 Estimated Revenues FY 2022	 50,574	
 Expenditures Budget		
Administrative Services Charge	(593)	
Capital Improvement Projects		
Aquatic Improvements	(100,236)	
Citywide Facilities Inventory	(5,645)	
Citywide Fee Review	(1,082)	
Total Expenditures Budget	(107,556)	
 Less Long Term Receivables/Deposits	 (14,613)	
Estimated Fund Balance 06/30/2022	\$ 222,058	
Change from prior month	\$ -	
 Available Fund Balance 08/31/2021	 \$ 177,837	
Change from prior month	\$ 4,838	



Development Impact Fees - Fund Balances FY 2022
Parks and Recreation related funds - activity through 08/31/2021
Subject to FY 2021 year-end audit

Fund 217 - Parks & Open Space Fund		<i>See Notes on page 3</i>
Estimated Beginning Fund Balance 7/1/2021	\$ 226,156	
Add continuing projects	3,751,691	
Add Long Term Receivables/Deposits	981,500	
Estimated Revenues FY 2022	706,088	
Expenditures Budget		
Administrative Services Charge	(1,881)	
Capital Improvement Projects		
Auburndale Amenities	(630,640)	
Butterfield Park Design	(36,000)	
Griffin Park Enhancements	(135,462)	
Lincoln Park Playground Equipment	(2)	
Mountain Gate Park Shade	(160,000)	
Mountain Gate Playground Equipment	(30,533)	
Parks Facilities/Amenities Inventory	(2,020)	
Parks Improvements	(2,898,035)	
Parks Master Plan	(100,000)	
Skyline Trail	(55,000)	
Total Expenditures Budget	(4,049,572)	
Less Long Term Receivables/Deposits	(981,500)	
Estimated Fund Balance 06/30/2022	\$ 634,363	
Change from prior month	\$ -	
Available Fund Balance 08/31/2021	\$ (66,373)	
Change from prior month	\$ 25,047	
<i>Temporarily negative due to 06/30/2021 adjustment (moved revenue to deposit). With new projects approved for FY 2022, fund balance is negative. Will monitor and adjust at mid-year, if needed.</i>		

Notes:

1. Budget amount for expenditures may include carryover funding from prior fiscal year.
2. Positive numbers = increases fund balance. Negative numbers = decreases fund balance.
3. Available Fund Balance = available to appropriate, already considers authorized expenditure budget.
4. Estimated Fund Balance 06/30/22 = Potential year-end fund balance, if all revenues received.
5. Beginning fund balances are estimated as year-end process/audit for FY 2021 are still in progress.